

Peterborough Science and Technology Park

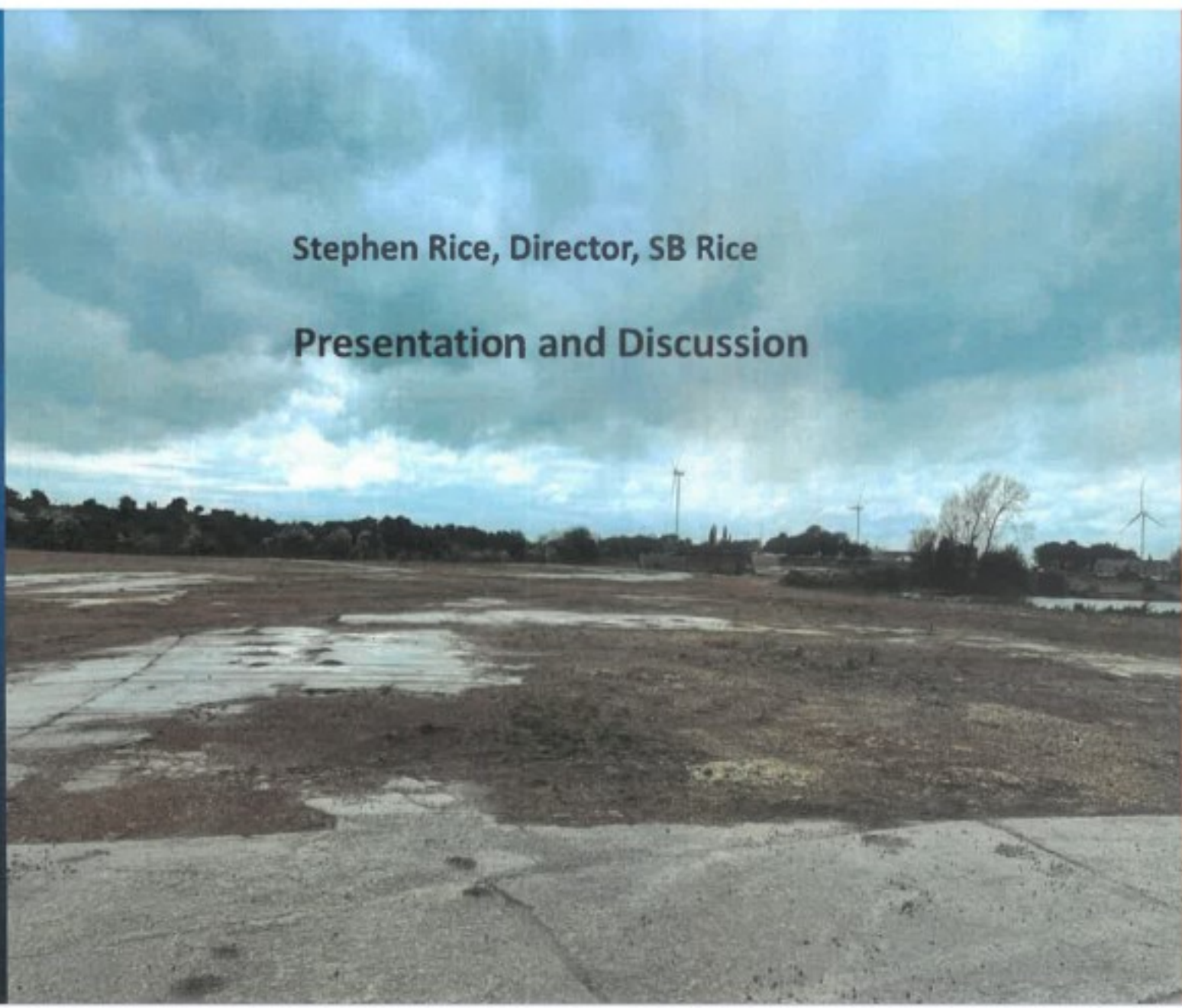
Presentation to
Whittlesey Town
Council

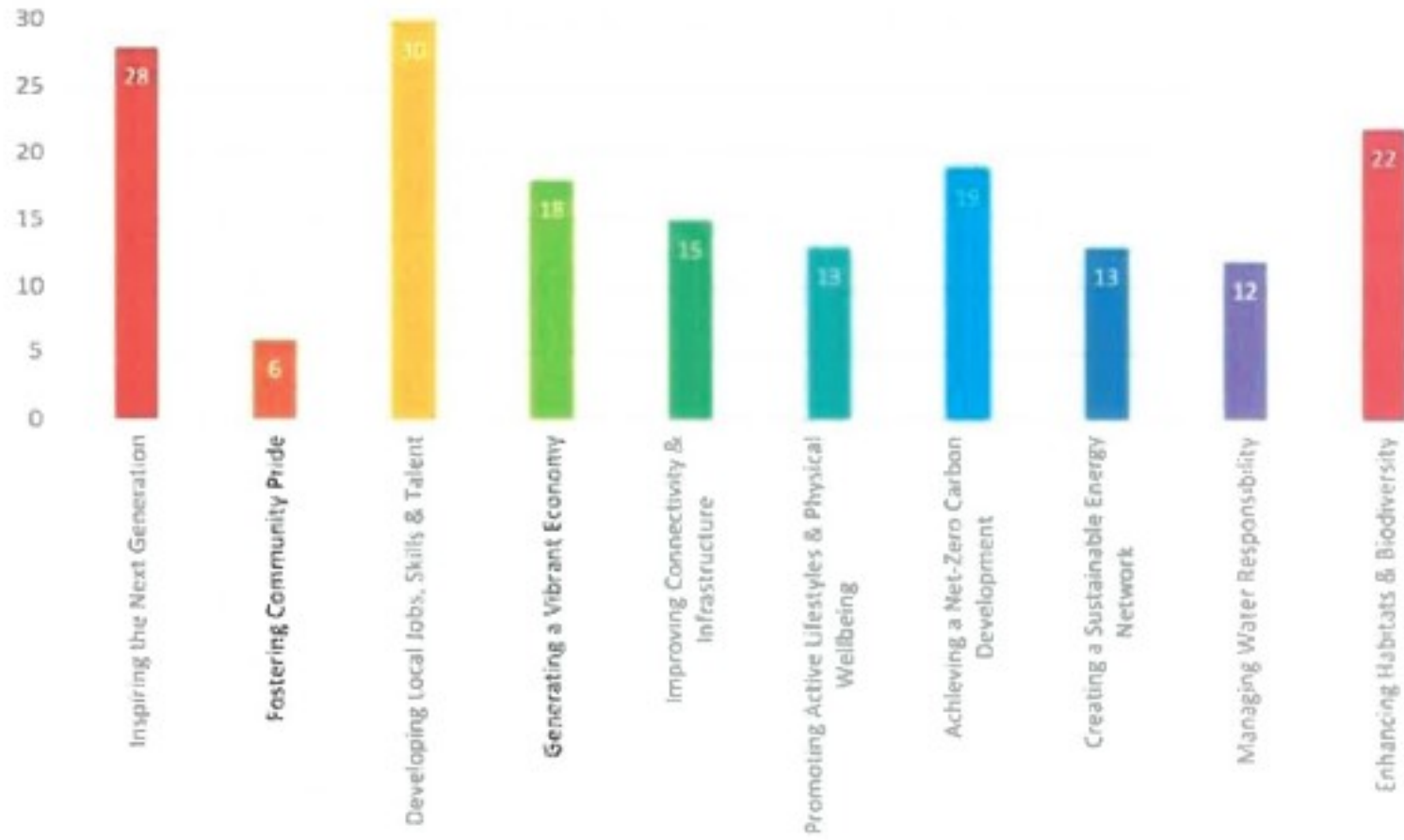
December 2024



Stephen Rice, Director, SB Rice

Presentation and Discussion





Key Design Objectives

- 65,000 m² Building Area including
 - Offices
 - Laboratories
 - High grade manufacturing
 - Energy and innovation centre
 - Café, gym and meeting rooms
- Transport Hub
- Public Open Space including walking/cycling routes
- SuDs and water circularity
- Biodiversity and Ecological Enhancement

LANDSCAPE ARCHITECTURE

CONCRETE PAVING & PLANTING FOR EXTERIOR USE

LANDSCAPE

PERMANENT PLANTING OF TREES

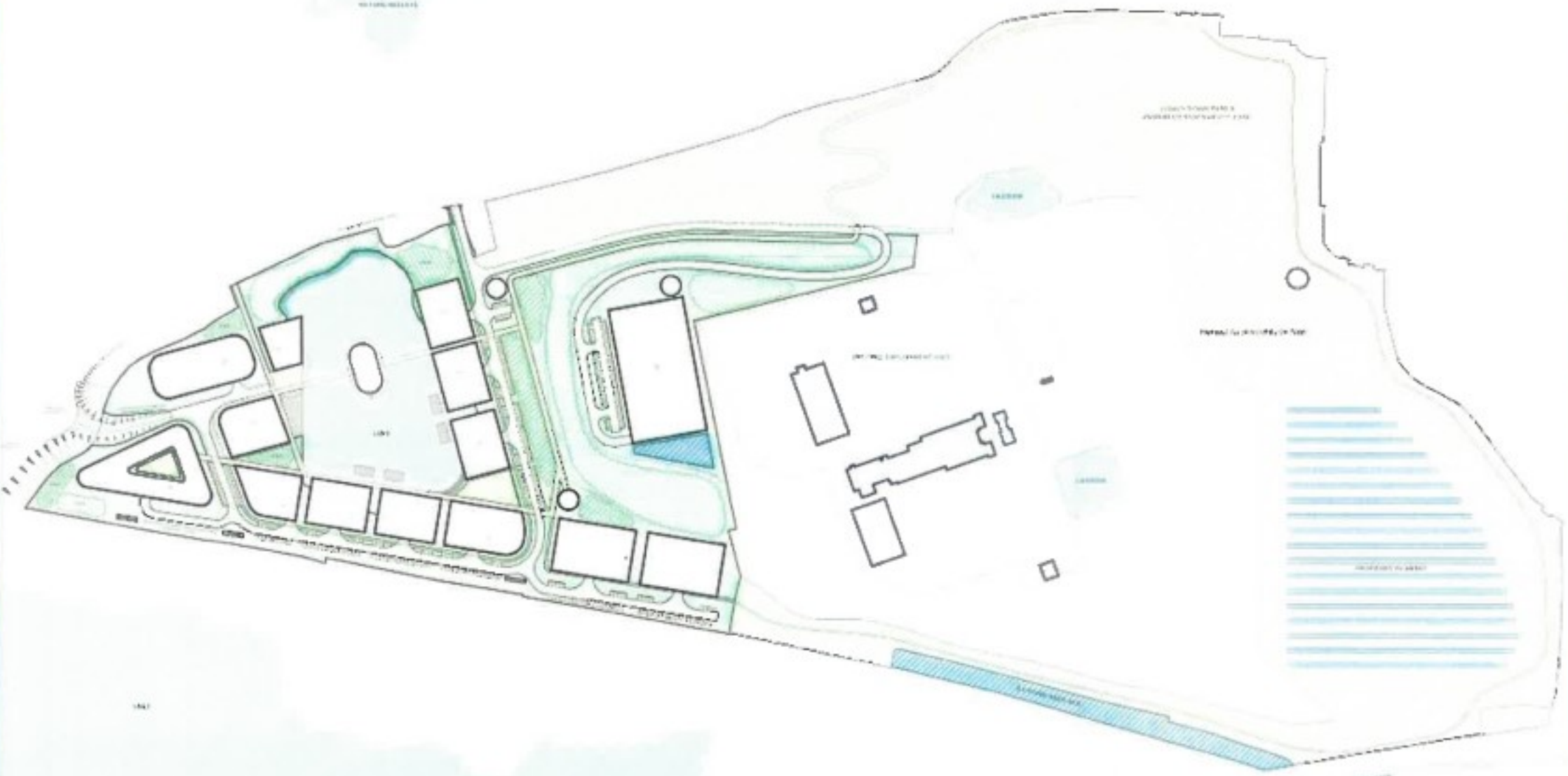
PERMANENT PLANTING OF TREES

LANDSCAPE

PERMANENT PLANTING OF TREES

PERMANENT PLANTING OF TREES

PERMANENT PLANTING OF TREES



DESIGN CONCEPT FOR LANDSCAPE CHARACTER



Outline Planning apart from Access and Scale

- Comprehensive Application with detailed assessments on;
 - Transport
 - Air Quality
 - Landscape
 - Heritage
 - Drainage
 - Ecology
 - Trees
 - Glint and Glare
 - Contamination Risk
 - Energy
 - Economic Benefit

The Planning and Development Process

- Planning Performance Agreement with Fenland District Council.
 - Enables seamless communication with Planning Officers
 - Identify issues raised by Consultees quickly and resolve
 - Agreed timetable
- Engaged with FDC Economic Devt Team and CPCA International Trade, Investment and Innovation Team
- In discussions with educational bodies

PSTP

Whittlesey Town
Council

Thank you

Q&A

