



BEDFORDSHIRE POLICE
Protecting People and Fighting Crime
Together



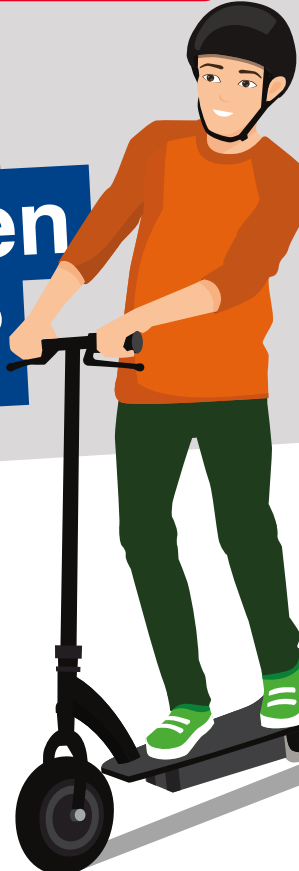
Creating a safer
Cambridgeshire



HERTFORDSHIRE
CONSTABULARY

Why am I being given this flyer?

**Because it's
currently against
the law to ride an
e-scooter on a
public road
or pavement.**



We understand that buying an e-scooter can be tempting, especially as you can get them from many popular retailers.

However, the current law is clear

You can buy one but you can't ride it on a UK public road, cycle lane or pavement. The only place an e-scooter can be used is on private land.

Why is this?

E-scooters are classified as Personal Light Electric Vehicles (PLEVs), so they are treated as motor vehicles and subject to the same legal requirements.

All details can be found on the following Government website:
<https://www.gov.uk/government/publications/powered-transporters/information-sheet-guidance-on-powered-transporters>

What happens if I've been stopped by Police?

The Police will advise you of the current law about how to use an e-scooter legally and ask you to take your e-scooter home. They may however still penalise you depending on the nature and gravity of the offence.

We understand the public's support for environmentally friendly modes of transport. We want to work with the public to make sure the roads are safe for everyone.

The UK Government is currently taking part in 'Future Transport Zone' trials for e-scooter hire, with a view to making them legal to use on the roads.

Check out the gov.uk website or enquire with your local authority for a trial closest to you.