



# Wisbech 2020 Vision

Presentation to Overview & Scrutiny Committee, 11 November 2019



Cambridgeshire  
County Council



Wisbech Town Council



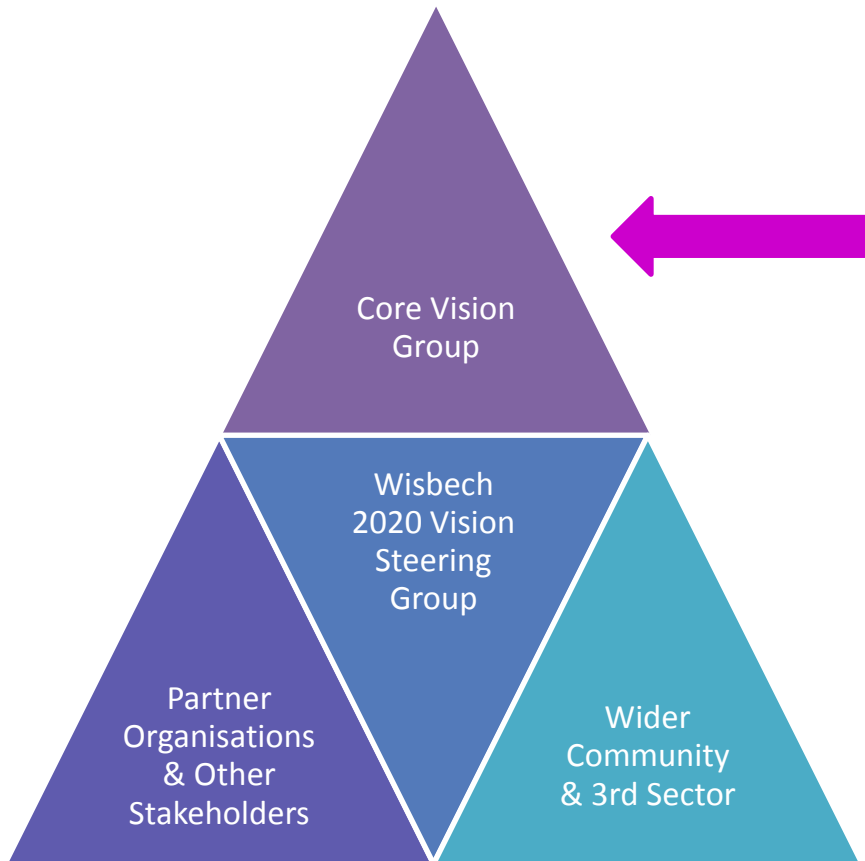
## Contents:

1. The story so far
2. A scale of challenge
3. Our collaborative approach
4. A transformational vision
5. Progress since the launch
6. Achievements and areas of focus
7. Our 12-month forward plan

## Q&A



# The story so far:



**Stephen Barclay**  
MP for North East  
Cambridgeshire



**Cllr Steve Count**  
Leader of CCC



**Cllr Steve Criswell**  
Chairman of CCC  
Communities &  
Partnership Committee



**Cllr Chris Boden**  
Leader of FDC



**Cllr Miss Sam Hoy**  
Leader of WTC



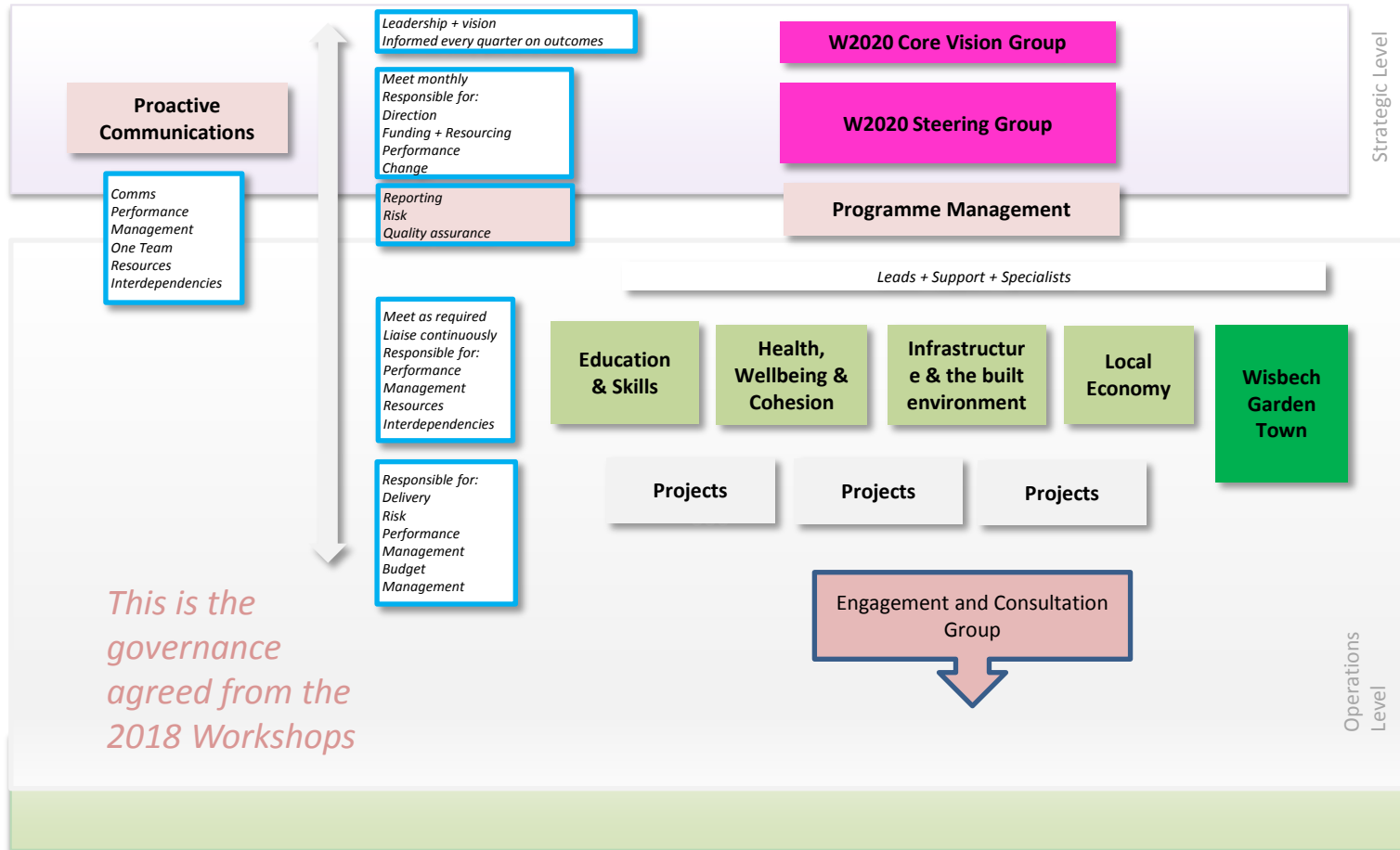
## A scale of challenge:

- Low education and skills attainment;
- Poor health and wellbeing;
- Lower life expectancy;
- Limited employment opportunities;
- Lack of community cohesion;
- Historic buildings in a state of collapse;
- Poor road connectivity;
- Poor rail connectivity;
- Need for economic regeneration.



# Our collaborative approach

## Wisbech 2020 - Governance



# Wisbech 2020 Vision Steering Group

## Peterborough City Council (PCC) & CCC

- Adrian Chapman – Joint Service Director: Community & Safety Services (Joint Meeting Chair)

## Fenland District Council (FDC)

- Gary Garford - Corporate Director (Joint Meeting Chair)
- Carol Pilson - Corporate Director
- Jo Blackmore - Executive Officer
- David Bailey - Traveller & Diversity Manager
- Lorraine Moore – Corporate Support Officer

## Wisbech Town Council (WTC)

- Terry Jordan - Clerk

## Cambridgeshire County Council (CCC)

- Graham Hughes - Executive Director
- Christine May - Assistant Director
- Jonathan Lewis – Service Director for Education

## Public Health (CCC)

- Dr Liz Robin - Director of Public Health

# Wisbech 2020 Vision Steering Group continued....

Cambridgeshire & Peterborough  
Combined Authority

- Domenico Cirillo – Business Space Manager
- Kate Beirne – Transport Project Manager

Anglian Water

- Russell Beal – Programme Manager for Wisbech 2020 Vision

Education

- Richard Scott - Associate Principal of Thomas Clarkson
- Clare Claxton - Head teacher of Orchards Primary School
- Carrie Norman - Principal of Peckover School
- Andrew Gedge – Assistant Principal, CWA

Health

- Matthew Smith - Local Chief Officer (Isle of Ely & Wisbech Local Commissioning Group) & Programme Lead for Proactive Care & Prevention (Cambridgeshire & Peterborough CCG)

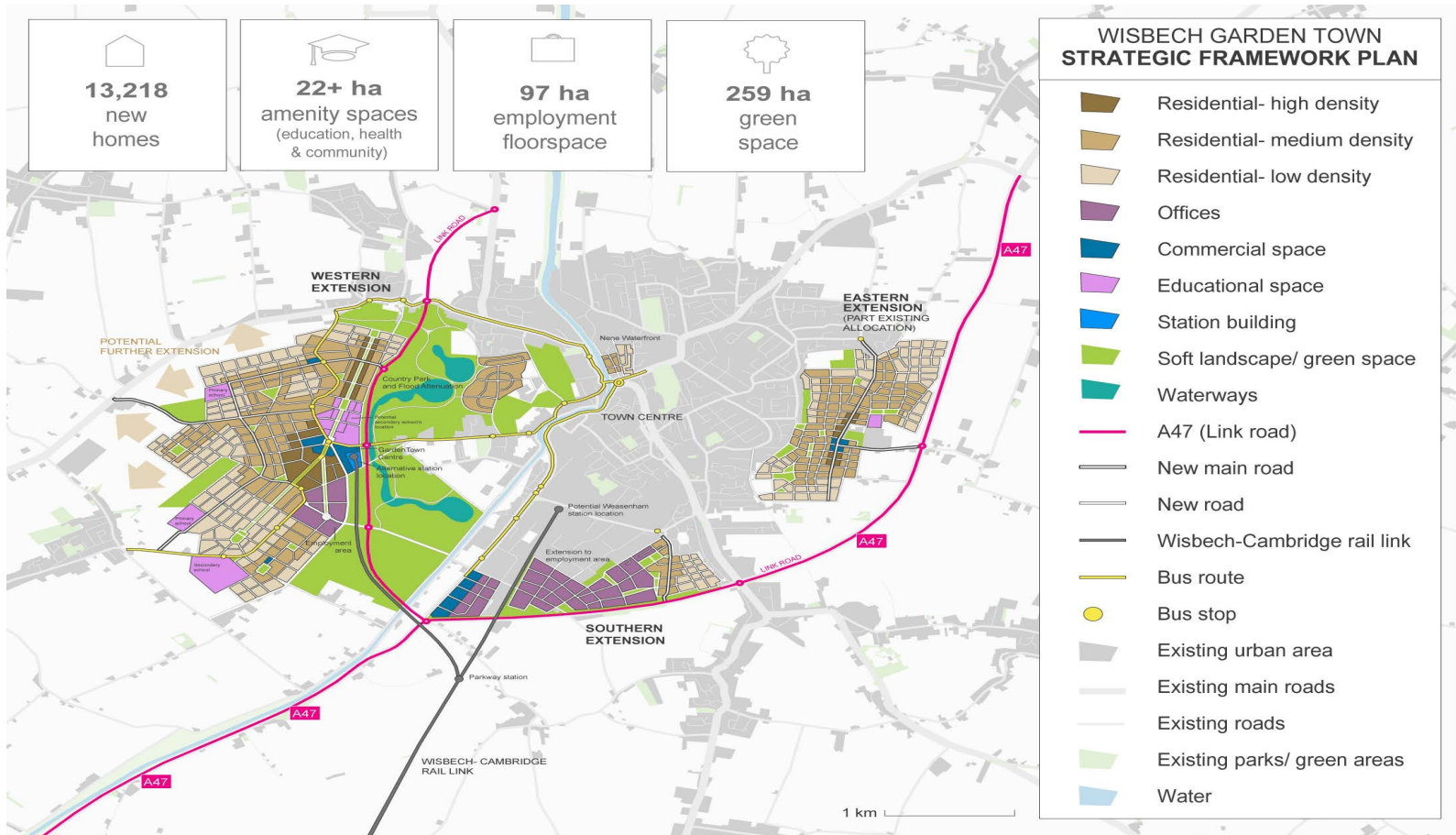
Housing

- Yvonne Ogden - Neighbourhood Investment Manager (Eastern Region) for Clarion Housing

MP's Office

- Adam Fairbrother - Senior Parliamentary Assistant

# A transformational vision - Wisbech Garden Town





# WGT vision - resilience

- Reduce the chance:
  - Breach-resilient Nene Bank
  - Long-term resilience = Nene Barrage
- Reduce the exposure:
  - Blue / Green infra
- Reduce the vulnerability:
  - Resilient housing
  - Community resilience



# Since the launch of the Wisbech 2020:

## Headline investment areas:

- £7.2mill at the CoWA;
- Annual business supported Careers Fairs;
- Extensive lobbying for rail & road;
- Opening of 2 new retail parks;
- £1.9mill heritage fund;
- Operation Pheasant;
- High-speed broadband promoted;
- Field trip to Holland;
- 50k Euros from Dutch Gov't;
- £6.5 mill funding for strategic appraisals;
- A formal Wisbech Garden Town bid;
- Extensive stakeholder support.





## Achievements and areas of focus - raising the profile:

- HRH Prince of Wales visit
- Princes Foundation visit
- BITC Executive visit
- Pride of Place - Blackpool
- Marks & Spencer visit
- Talk in Bradford



## What we need to do more of...

- More proactive engagement with local business leaders;
- More proactive engagement with the public and third sector.



# Theme 1 – Educations and Skills

- Opportunity Area Project (evidence supplied by the Wisbech 2020) providing more quality teachers;
- TCA overall performance improvements;
- Anglian Water training facility thriving at CoWA;
- Arts workshops held in Wisbech Library / Museum;
- Women in Engineering event held at the QMC;
- Industry involved in 6<sup>th</sup> form interviews;
- CLLD support to overcome employment barriers.



## Theme 2 – Health, Wellbeing and Cohesion

- A range of community support projects delivered;
- 'I Love Wisbech' – community engagement survey completed;
- Addressing smoking issues;
- Supporting young families;
- Reducing prevalence of drugs;
- Reducing prevalence of domestic abuse;
- Developing 'Think Communities' prototype.

I ♥  
Wisbech

(Note - Purdah rules have postponed the planned December W2020V event. This replaced the Summit for 2019).



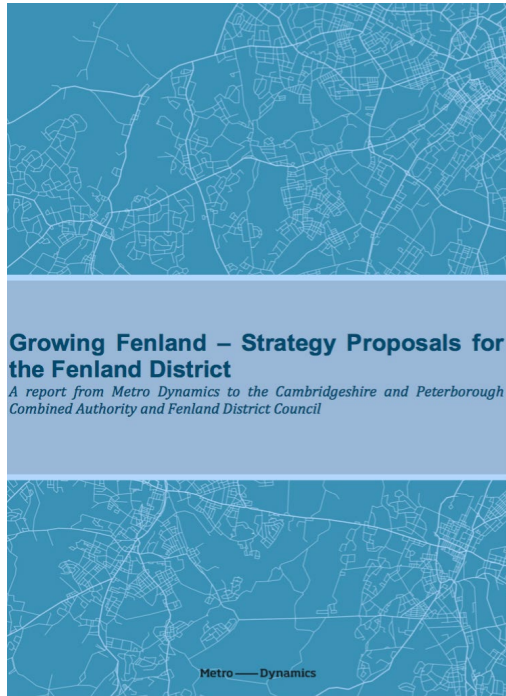
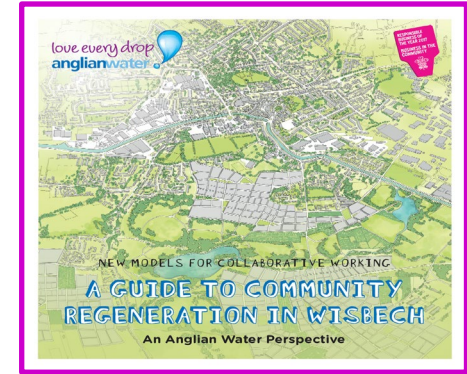
## Theme 3 – Infrastructure and the Built Environment

- Wisbech Rail – see CPCA progress report;
- Wisbech Access Study detail design ongoing;
- A47 feasibility appraisal ongoing;
- New affordable and private housing on the Nene Waterfront site;
- World-class flood risk appraisal work progressing;
- A new Study - ‘Wider benefits of a barrage’ is being considered;
- Work continues on regeneration of High Street;
- Fens Biosphere nomination.



# Theme 4 – Local economy

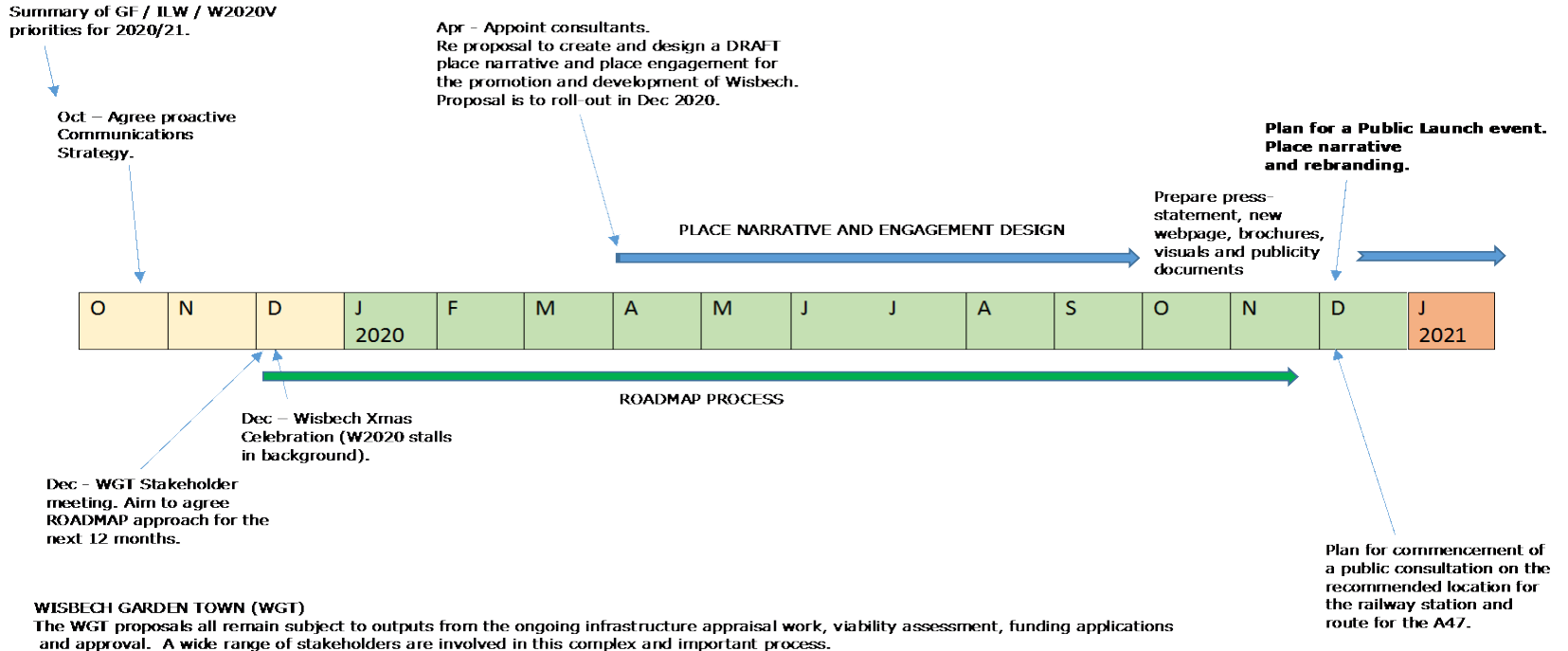
- Wisbech Market Town Masterplan report produced and currently with various committees;
- Growing Fenland Strategic Proposals for the Fenland District report produced for the CPCA.





# Our Forward Plan:

## Appendix 2 – W2020V COMMUNICATIONS – PROPOSED FORWARD PLAN (aim is to focus communications and engagement up to the end of 2020)



RBB151019v4

