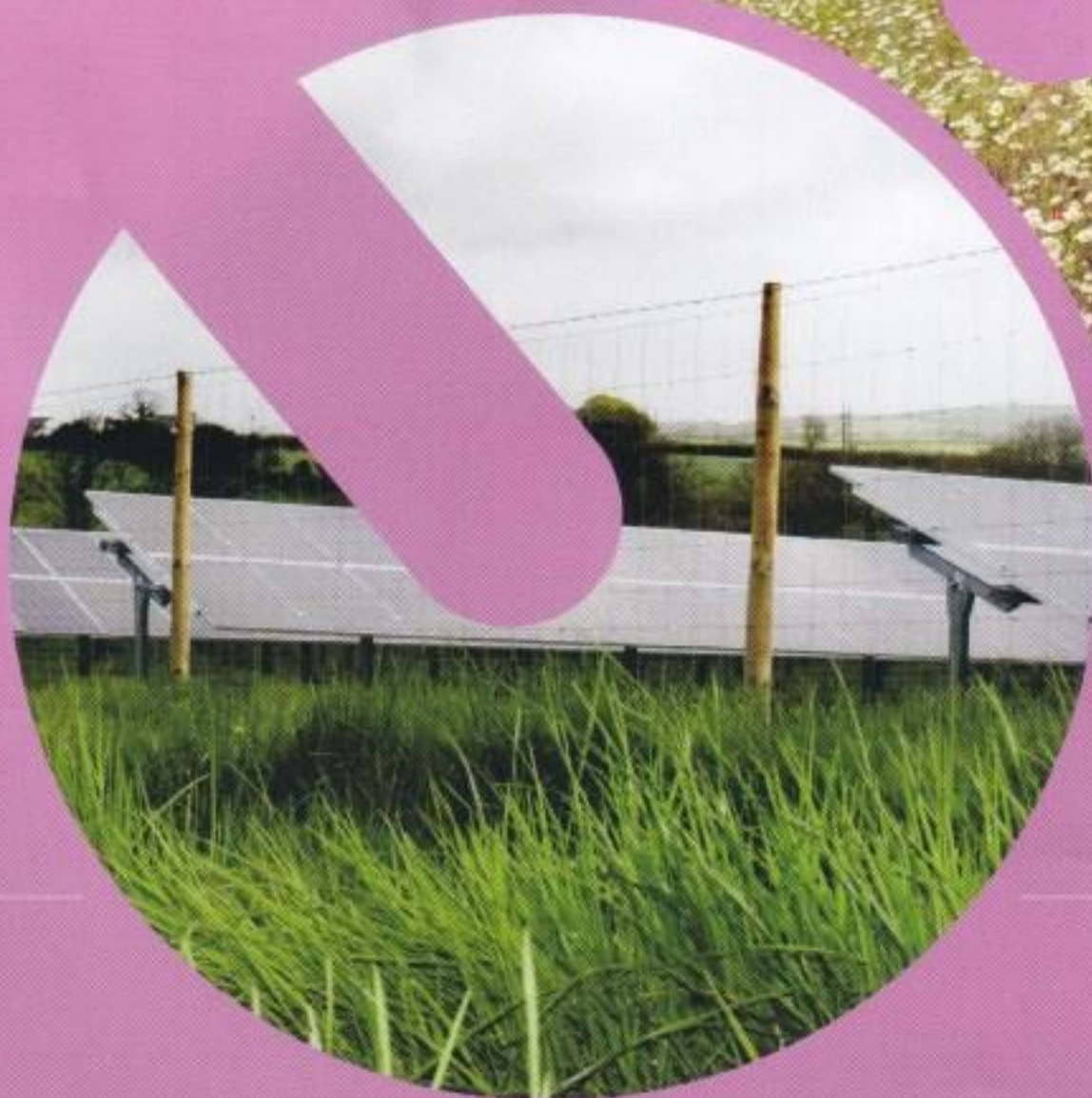


EASTREA & COATES SOLAR FARM IN BRIEF

THE INFORMATION IN THIS BOOKLET WILL EXPLAIN THE BENEFITS OF SOLAR ENERGY AND HOW A SOLAR FARM WILL FIT INTO THE EASTREA & COATES COMMUNITY.





NET ZERO BY 2050

The UK Government's climate strategy brings together the UK's de-carbonisation policies and recognises the importance of a holistic approach. It has set the ambitious climate change target of reducing emissions by 78% by 2035 compared to 1990 levels, with the ultimate aim of reaching net-zero by 2050.

Solar power will play an essential part in reaching those targets and reducing global warming.

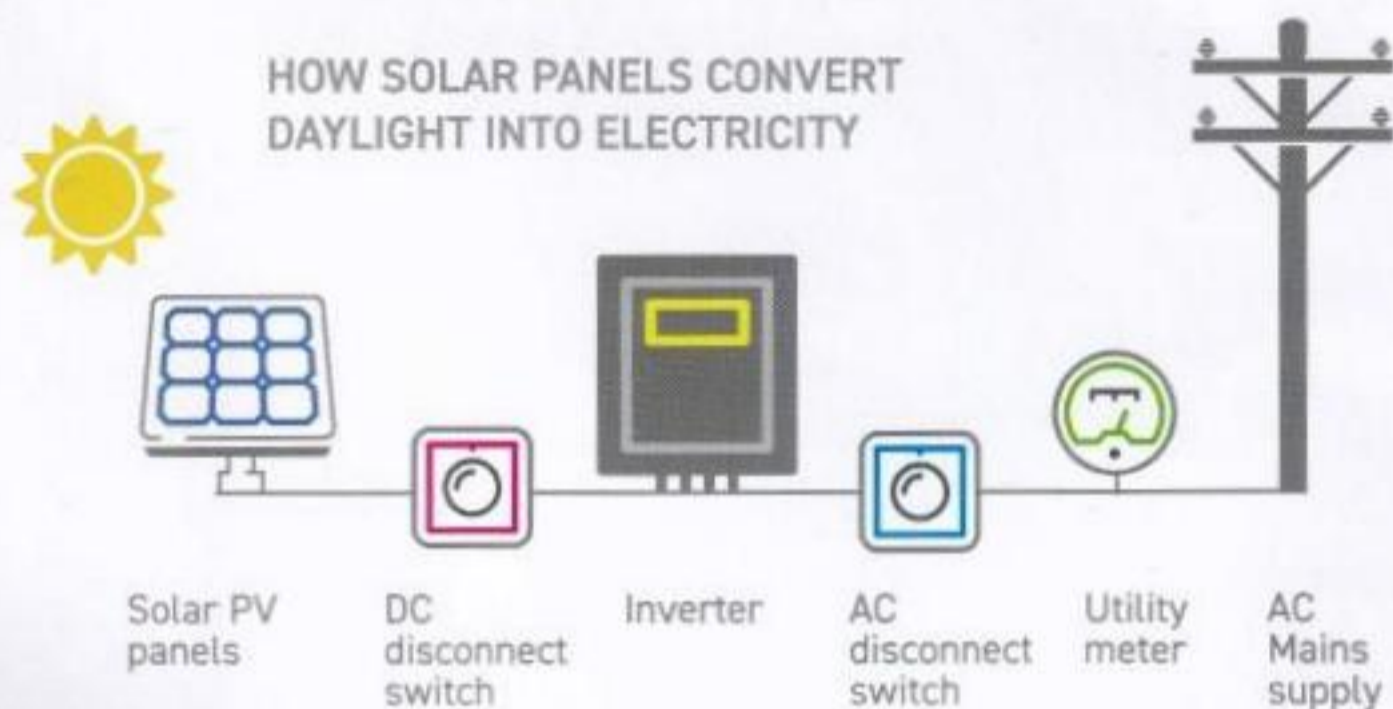
PROPOSED EASTREA & COATES SOLAR FARM

Given the declining cost of solar power, the strong transmission network in the region and local power demand, the proposed solar farm is an important source of new power generation.

Green Switch Capital proposes installing a solar farm on two parcels of land: at Eastrea, off Drybread Road, and Coates, off North Green/Cow Way, covering an area of circa 65.5 acres/27.3 hectares.

This booklet will explain the benefits of solar energy and how a solar farm will fit into the Eastrea & Coates community.

WHAT IS A SOLAR FARM?



HOW DO SOLAR PANELS WORK?

Solar Panels convert daylight into electricity.

Light shining on the panel creates an electric field across silicon layers in each cell, causing Direct Current (DC) electricity to flow.

This is then converted by an 'inverter' into the usable Alternating Current (AC) electricity that powers our homes.

Solar panels do not need direct sunshine to work, just daylight meaning that they can still generate electricity on dull days.

PV panels have an expected life of at least 40 years.

Solar parks require minimum maintenance once constructed. Visits to the site will happen periodically to cut grass and wash the panels with water.

THE NUMBERS

9,677

Eastrea & Coates Solar Farm will generate enough electricity to power around 9,677 homes per year.

12,900

Each year of its 40-year lifespan will offset approximately 12,900 tonnes of CO₂ per year.

30

Eastrea & Coates Solar Farm will generate approximately 30MW of renewable energy per year.

8,074

Eastrea & Coates Solar Farm will consist of 8,074 solar panels, and cover an area of approximately 65.5 acres/27.3 hectares.

12

The construction phase typically lasts 12 weeks and there will be daily deliveries to the site over that period.

40

Its operational life will be 40 years.

THE FACTS



BIODIVERSITY

A Biodiversity Management Plan will ensure minimal disturbance to plants and animals. In addition, the plan will enhance and manage habitats to promote biodiversity on the site.



NOISE LEVELS

Solar panels create minimal noise. Noise from the inverters and substations is lower than the existing background noise and will be unlikely to affect nearby residents.



ANTI-GLARE PANELS

Solar PV panels absorb light. Therefore, reflected light is much lower than that generated by standard glass and other reflective surfaces.



EMISSIONS

Solar farms create no CO₂ or other pollutants.

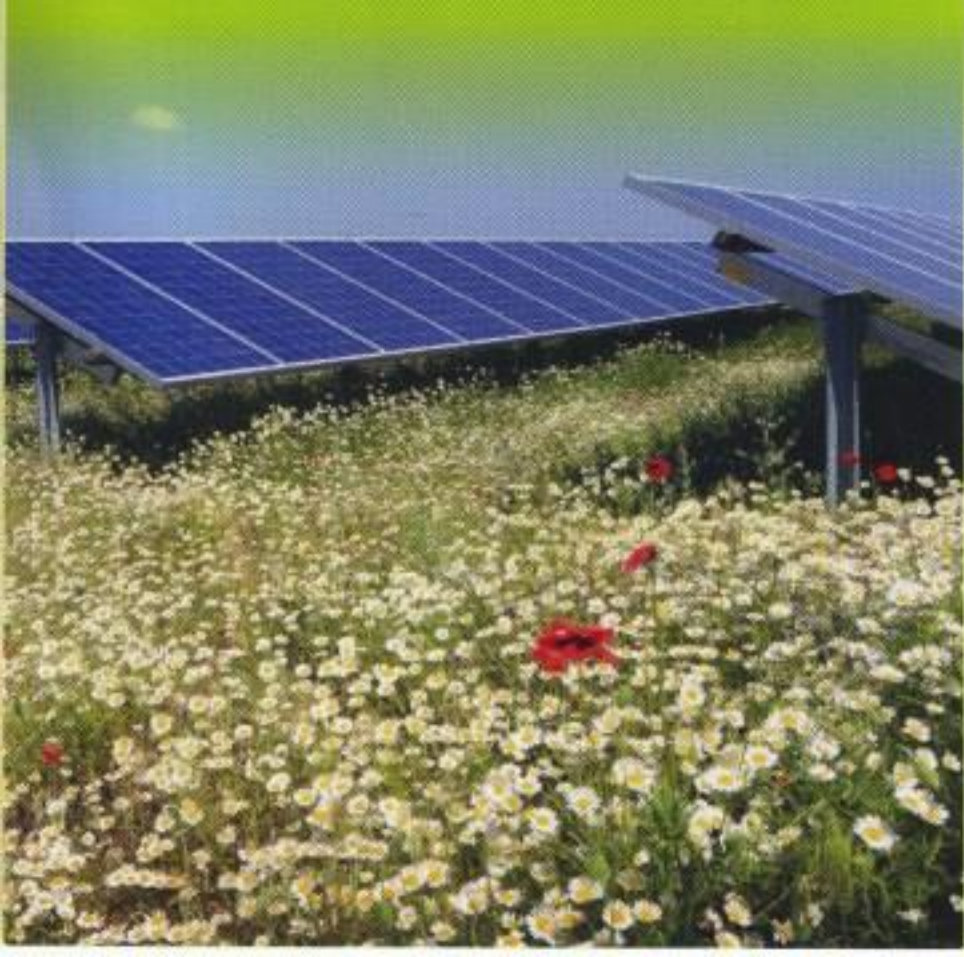
They don't contribute to climate changes or local air pollution, therefore assisting in the transition towards cleaner electricity generation.



THE LANDSCAPE

Trees and hedgerows will be maintained at the height of 3M around the site. These will screen the area from view at most points in the local landscape.

We will identify areas of planting which will minimise any negative effects and positively contribute towards views and the character of the landscape





FLOOD RISK

The solar panels will have little to no impact on the current flood risk and drainage conditions at the site and surrounding area.



SOIL

No soils will be lost and when the solar farm is decommissioned the land will be returned to its original condition.



TRANSPORT

During construction large vehicles will be restricted to non-peak hours to reduce traffic impact on the local roads. Associated traffic will be minimal following construction.



AGRICULTURAL

The solar farm is considered a temporary development.

The agricultural land quality would not be affected, and animals can graze between the panels.



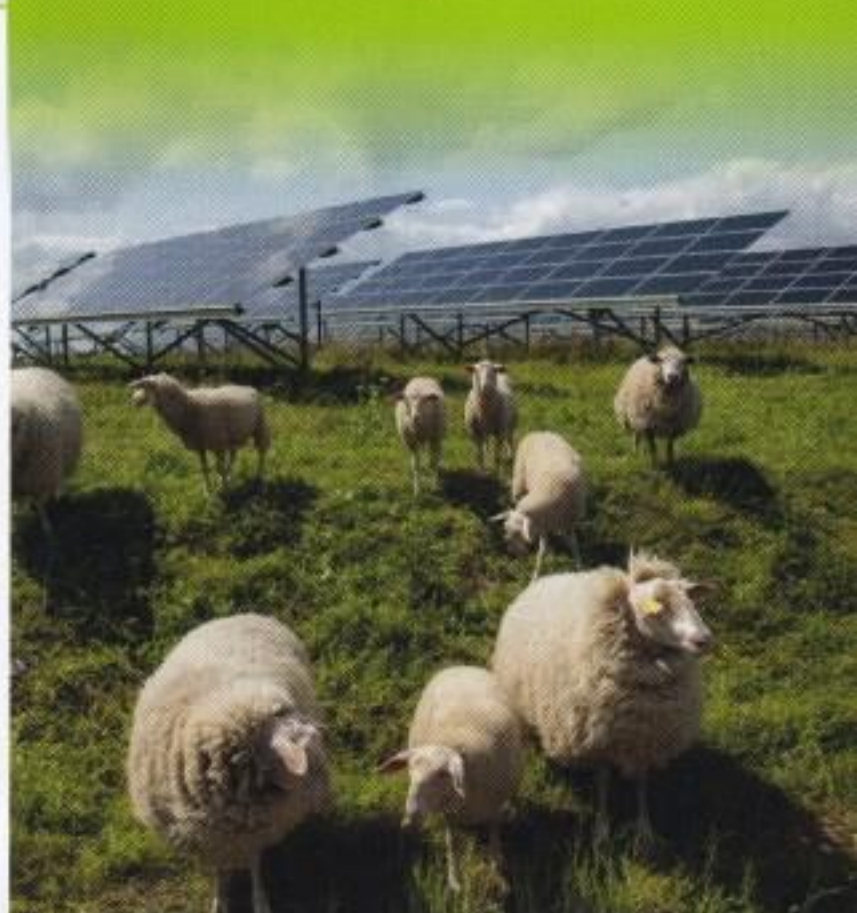
DE-COMMISSIONING

The operational life of the solar farm is 40 years, after which the infrastructure is removed, and the land returned to its original agricultural use.



JOBS

The solar farm will create direct and indirect jobs during construction. This will benefit local people and businesses.





GET IN TOUCH

Please feel free to contact us via the Eastrea & Coates website if you have any concerns regarding the project.

www.eastreaandcoatesolarfarm.co.uk