

Request control

NH +6 Nick Harding

Participants

Share invite

Presenters (2)

- KG Kasia Gdaniec External
- NH Nick Harding External

Attendees (14)

- FG Frederick Gerstner
- AM Alex Miscandlon (Guest) Meeting guest
- CH Chris Hennen (Guest) Meeting guest
- CS Cllr Julie Smith (Guest) Meeting guest
- DR David Rowen External
- DL Dee Laws (Guest) Meeting guest

HET Development Management Task List



Advise Planning Authorities and national agencies on the archaeological and cultural heritage implications of development proposals. Input to planning policy, Local Plans, Minerals and Waste Plans, SPDs. Handle archaeology programmes attached to planning applications, including mitigation schemes.



Advise applicants/agents and archaeological contractors on the archaeological/historic environment requirements of development schemes using and supplying HER data; determining significance of known resource.



Set programme requirements for evaluations and mitigation strategies in **briefs**, contribute to research directions, approve Written Schemes of Investigation (**WSIs**) with embedded outreach and public engagement plans. Support public interest.



Monitor compliance, uphold fieldwork and reporting standards, contribute to research directions and comparator sites for the analysis programme.



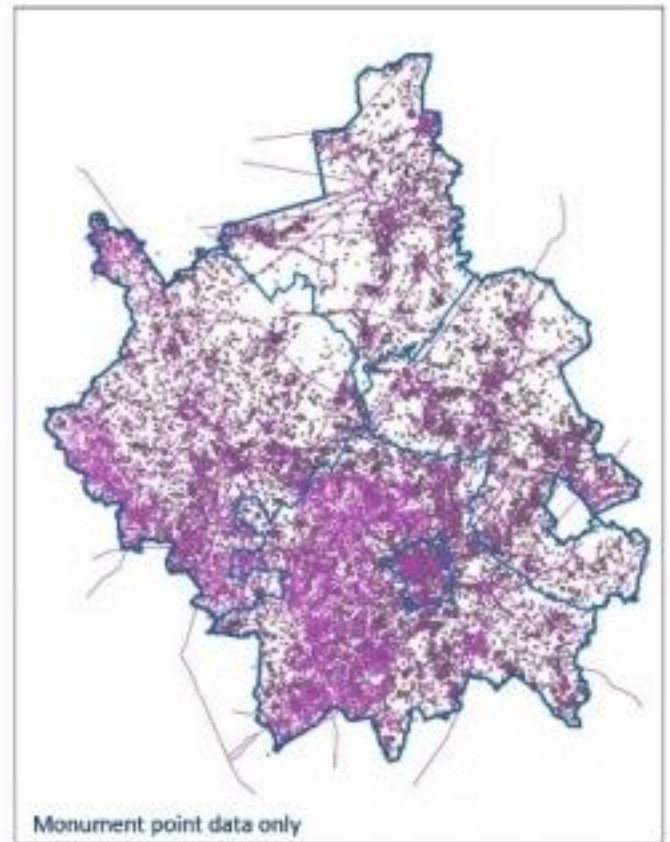
Monitor post excavation stages of assessment, analysis, publication, deposition and, where possible, the display of the archaeological archive.



Participants

Share invite

- NH Nick Harding External
- Attendees (14)
- FG Frederick Gerstner
- AM Alex Miscandlon (Guest) Meeting guest
- CH Chris Hennen (Guest) Meeting guest
- CS Cllr Julie Smith (Guest) Meeting guest
- DR David Rowen External
- DL Dee Laws (Guest) Meeting guest
- I Ian (Guest) Meeting guest
- KM Kay Mayor (Guest)



Designated Heritage Assets

Scheduled monuments	268
Listings	7,298
Grade I	235
Grade II*	443
Grade II	6,648
Registered Parks/Gardens	34
Designated assets	7,600

Non-designated Heritage Assets

Monuments	27,290
Fieldwork Events	6,408



Fenland

19

10

43

595

1

668

Historic England and District Conservation Officers

HET



NH

+6



Nick Harding

Participants

Share invite

NH Nick Harding External

Attendees (14)

FG Frederick Gerstner

AM Alex Miscandlon (Guest) Meeting guest

CH Chris Hennen (Guest) Meeting guest

CS Cllr Julie Smith (Guest) Meeting guest

DR David Rowen External

DL Dee Laws (Guest) Meeting guest

I Ian (Guest) Meeting guest

KM Kay Mayor (Guest)

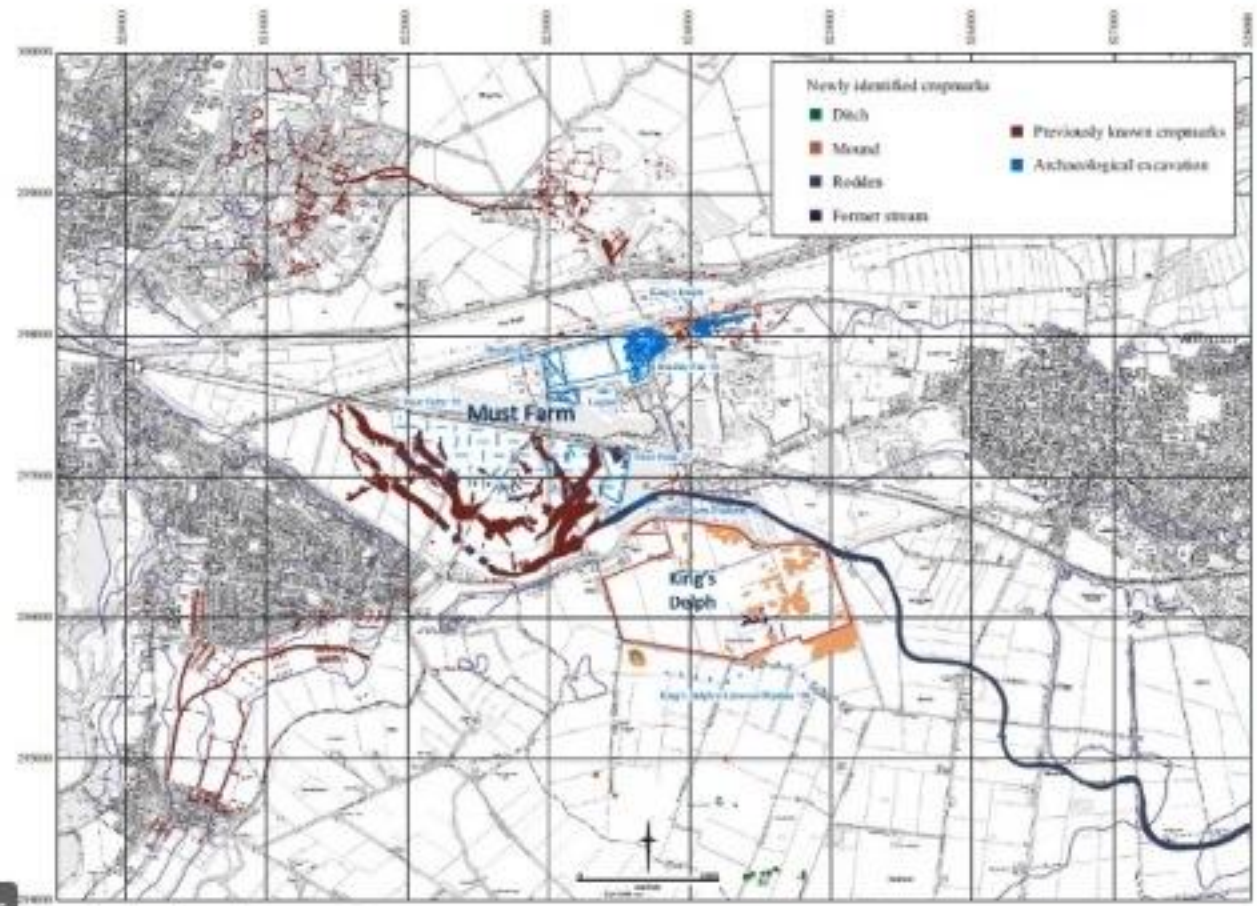


Quarries in Fenland

Whittlesey

Must Farm 132 ha
King's Delph 119 ha

CAU 2010 R915 EC83277



Kasia Gdaniec

Figure 3. Archaeology within surrounding area



Request control



Leave



Nick Harding



Participants



Share invite

NH Nick Harding External

Attendees (14)

FG Frederick Gerstner

AM Alex Miscandlon (Guest) Meeting guest

CH Chris Hennen (Guest) Meeting guest

CS Cllr Julie Smith (Guest) Meeting guest

DR David Rowen External

DL Dee Laws (Guest) Meeting guest

I Ian (Guest) Meeting guest

KM Kay Mayor (Guest)



Late Bronze Age Wilburton type sword (1300-1000BC) found with fragments of its lead pommel



Late Iron Age La Tène II type sword (100BC) complete with wooden handle (spindle) and scabbard (willow). Tiscele motif (above) is shown on upper blade.

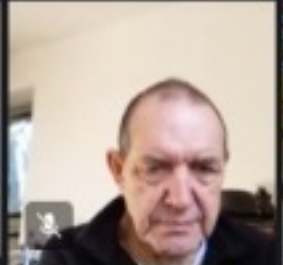
Figure 5. Metalwork. 1) EIA Swan headed pin. 2) La Tène brooch. 3) Baldric ring with stamp. 4) MBA leaf-shaped razor. 5) Wilburton type II sword. 6) M LBA rapier. 7) LBA dagger. 8 & 9) bent La Tène sword



Request control



Leave



Melton JP, J...



Participants



Share invite

NH Nick Harding
External



Attendees (13)

FG Frederick Gerstner



AM Alex Miscandlon (Guest)
Meeting guest



CH Chris Hennen (Guest)
Meeting guest



CS Cllr Julie Smith (Guest)
Meeting guest



DR David Rowen
External



DL Dee Laws (Guest)
Meeting guest



KM Kay Mayor (Guest)
Meeting guest



LA linda ashley (Guest)
Meeting guest



Kasia Gdaniec