



Cambridgeshire Resurfacing Scheme

Communication Update WE 23/04/2021



Purpose:

To undertake repair of drought damaged roads across the county by means of deep road reconstruction to replace the foundations and replace the surface to ensure carriageway resilience.

The routes chosen for repair are:

B660 Long Drove, Holme

B1093 Fifty Road, Manea

B1040 Ramsey Road, Pondersbridge

B1104 Prickwillow Road and Putney Hill Road

In addition, general maintenance will be undertaken including:

Vegetation clearance

Drainage works

Signage works

Road markings

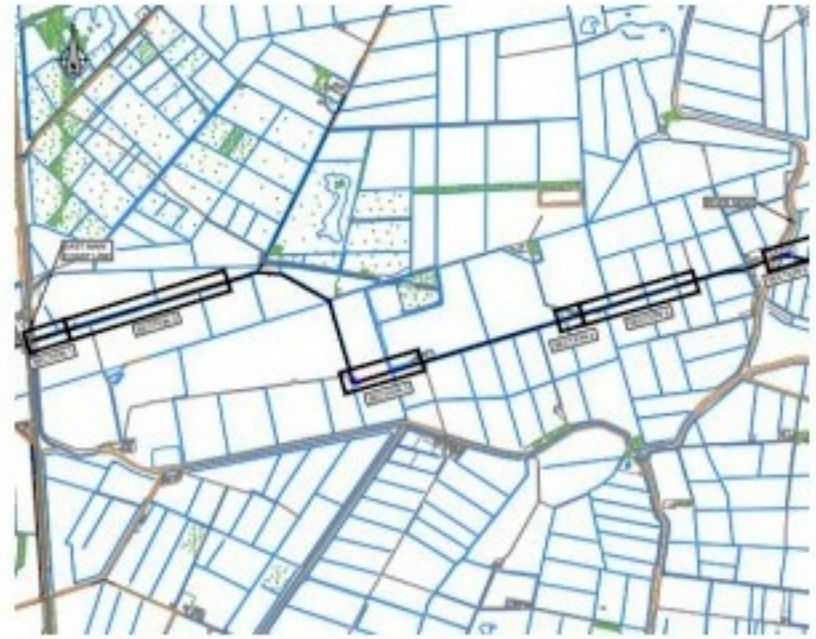
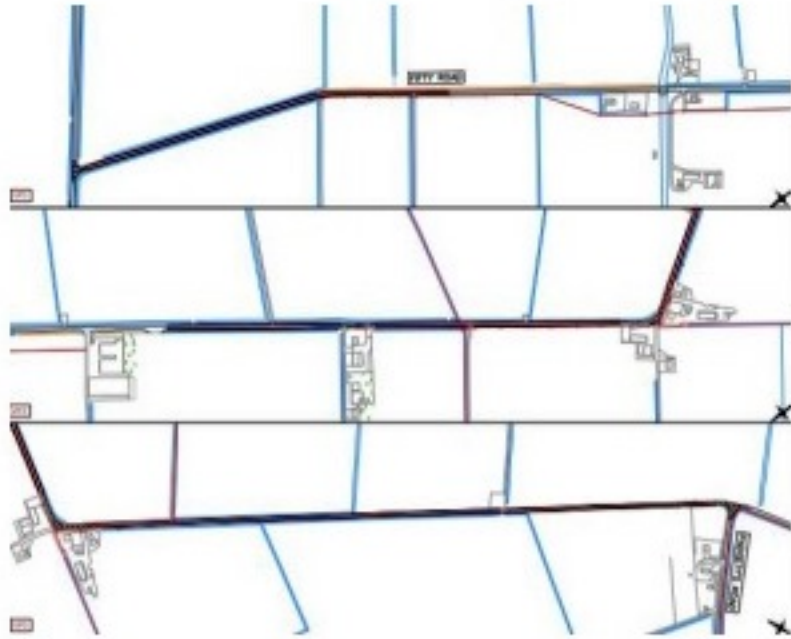
For additional information about the scheme, please visit: local.projects@cambridgeshire.gov.uk

Site Contacts:

In case of site emergencies please contact:

- Andrew West – Site Agent
Email: andy.west@eurovia.co.uk

Site emergency out of hours number: 07597 548822



For more information about the scheme please visit:
www.cambridgeshire.gov.uk and click on transport projects

Works Completed

- **B660 Holme Road** – Works now complete, with the cold milling and surfacing of the bridge section to follow the bridge works completion
- **B1093 Manea** - Carriageway surfacing on going with approx. 11,000m² surface course laid
- **B1104 Prickwillow Road** – carriageway cold milling and rubblizing of approx. 5,500m². has been completed, with Sub base laid approx. 4,000m² depth of 170mm approx
- **B1040 Ramsey Road** - carriageway cold milling has been completed to approx. 5,300m². sub base laid approx. 5300m² in one layer 150mm thick.

Fifty Road Surfacing Works

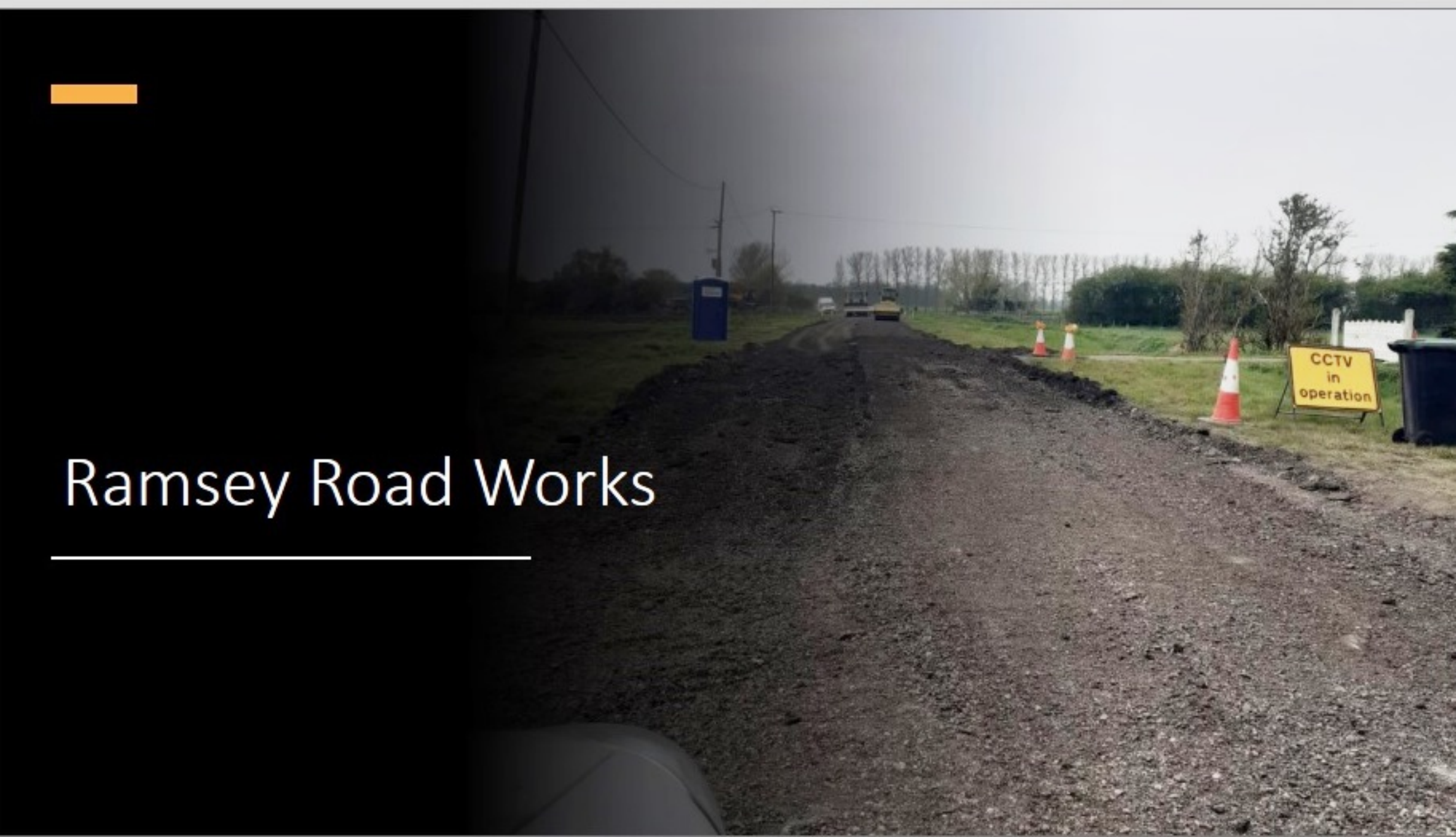




Section 1
Ramsey Road
Planing Works



Ramsey Road Works





Fifty Road Surfacing Works

Fifty Road Section 2 Surfacing Works



A long, straight road under construction, stretching into the distance. The road surface is uneven, with dark asphalt in the center and lighter, sandy or gravelly material on the sides. A yellow construction machine is visible in the distance, moving away from the camera. The road is flanked by green grass on the left and tall, dry grass on the right. The sky is overcast and grey.

Ramsey Road Section 1
400m Boxed Works

Ramsey Road Planing Works





B660 Holme Road -
Surfacing Works



Rubblizing Works
Prickwillow Road



Rubblizing Works Prickwillow Road



B1093 Manea Road Full Width Surfacing Works

Social Media Update WC 26.04.21



Works across our Cambridgeshire Resurfacing Scheme are progressing well:

- Surfacing has been completed on the B660 Fifty Road
- Planing and reconstruction of the B1040 Ramsey Road is underway
- Manea Road B1093 full width surfacing course has been completed

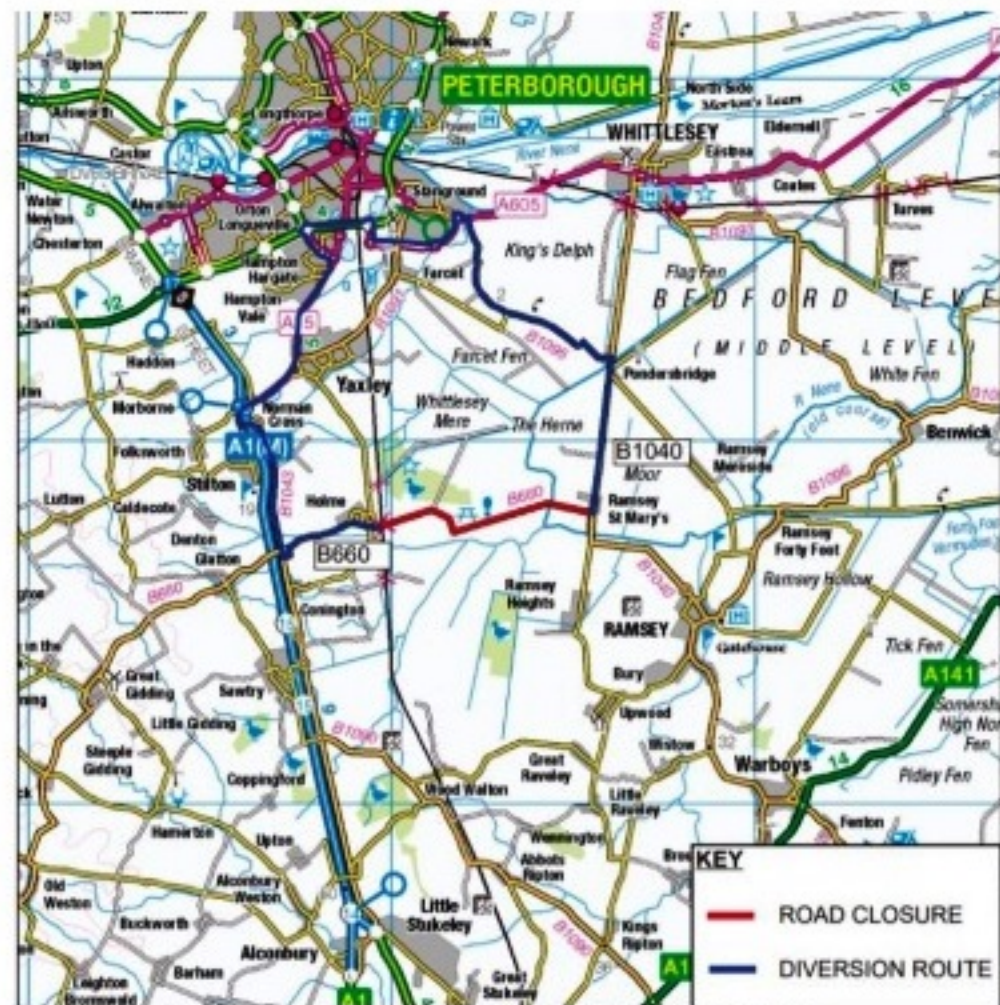
Works Programmed 26.04.21

- **B1093 Manea Road** – Completion of carriageway surfacing is scheduled in preparation for cold milling and surfacing of junctions, top-soiling and sign installation – field access infill
- **B1104 Prickwillow Road** – Sub-base installation (1600mv) is scheduled to be completed
- **B1040 Ramsey Road** – The completion of the sub-base in first 800m section is scheduled in preparation for the cold milling of section 2 (400m approx) followed by the installation of sub-base , strataweb TX7 and TX170 membrane

Traffic Management:

Management:

Long Drove, Holme Diversion Route



Scale 1:50,000
© Crown copyright and database rights 2000-01. OS 100013001
Use of this data is subject to terms and conditions.
<http://www.candlemap.com/terms-and-conditions>

Traffic Management:

Fifty Road, Manea Diversion Route

Fifty Road, Manea Diversion Route



Traffic Management:

Tipps End Diversion Route

Tipps End Diversion Route

Cambridgeshire County Council





Emergency Contact:



Throughout the site, we have installed signage detailing of our emergency contact number, providing the public and/ or emergency services with a direct contact to our site teams.