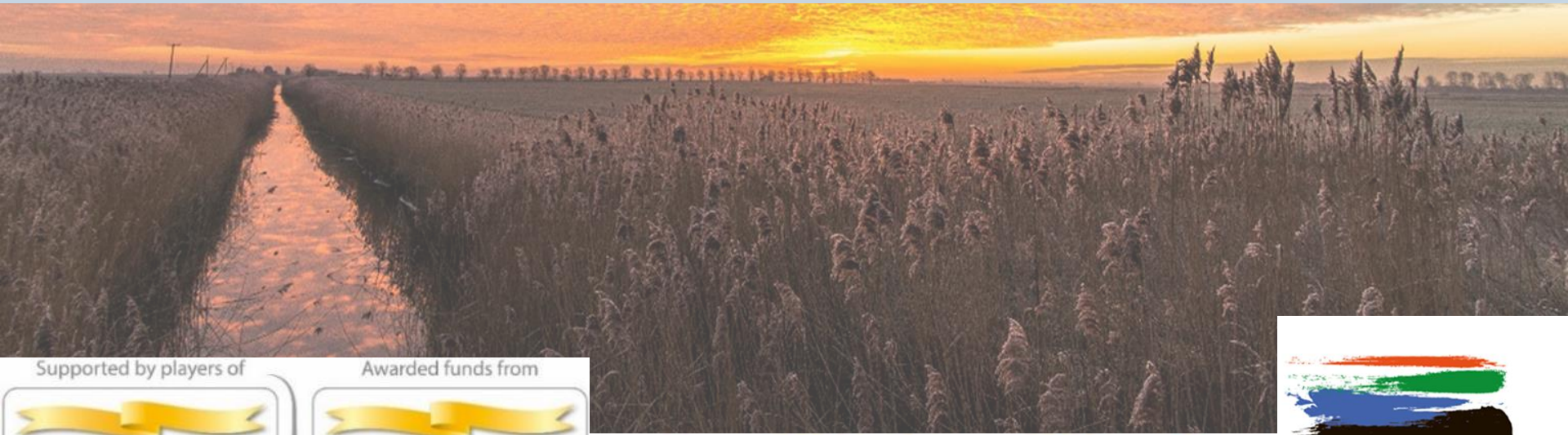


Whittlesey Town Council Full Council Meeting, 19 Nov. 2020

A UNESCO Fens Biosphere: Big Skies, Big Vision

Mark Nokkert, Programme Development Manager, Cambridgeshire ACRE
Dr Roger Mitchell, Chair of the Fens Biosphere Steering Group
Catherine Weightman, Cambridgeshire Team Leader, Natural England



Supported by players of



Awarded funds from



Water Works
PEAT PEOPLE SCIENCE



FENS
BIOSPHERE



Fens Biosphere Steering Group Partners



Not a Biosphere





UNESCO Biospheres

701 Biospheres in 124 Countries
7 in the UK



Global Recognition for Special Places

Biospheres deliver:

- ✓ **Sustainable Socio-Economic Development**
- ✓ **Environmental Improvements**
- ✓ **Knowledge Exchange**



United Nations
Educational, Scientific and
Cultural Organization



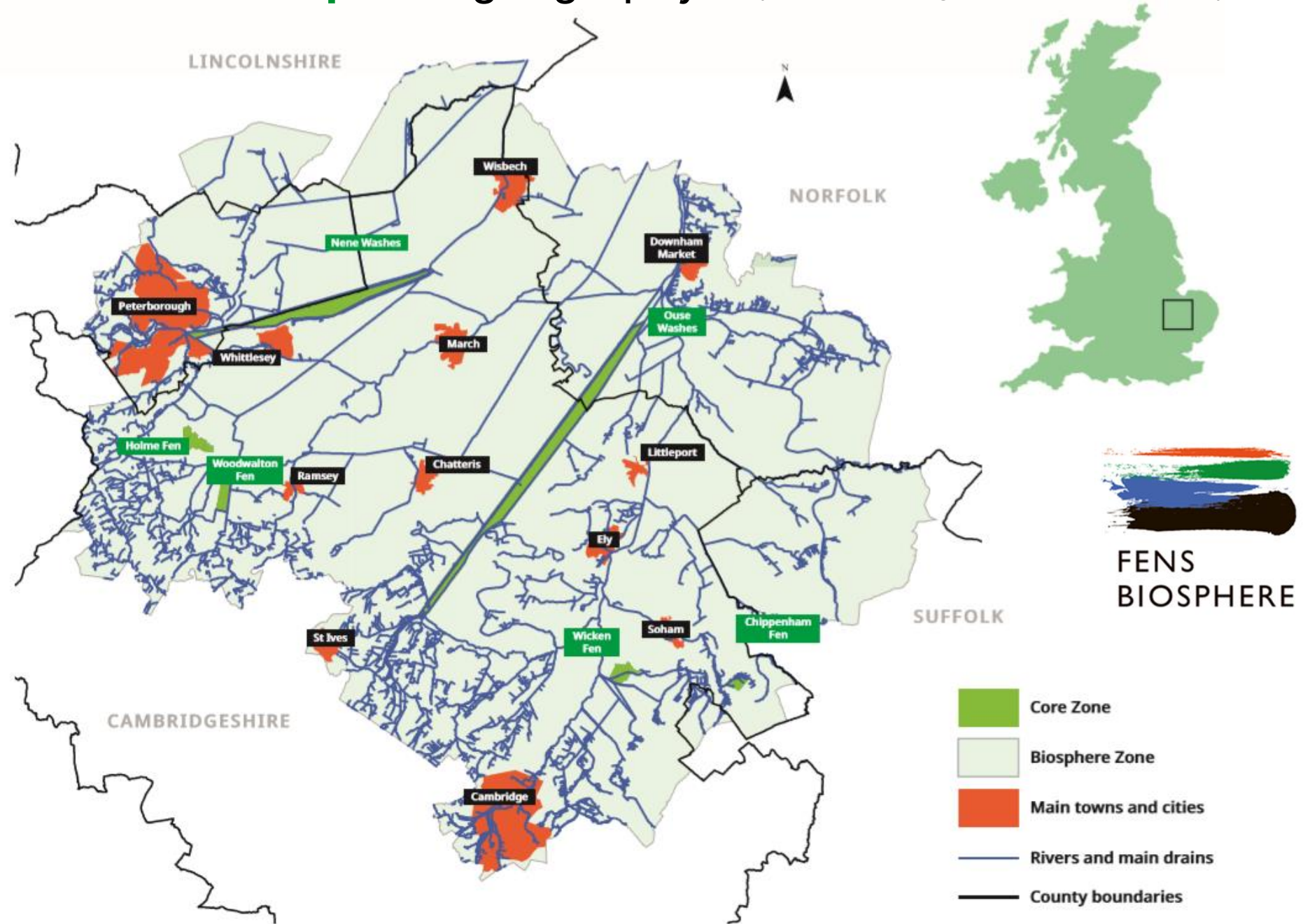
UK National Committee
of Man and the Biosphere
Programme



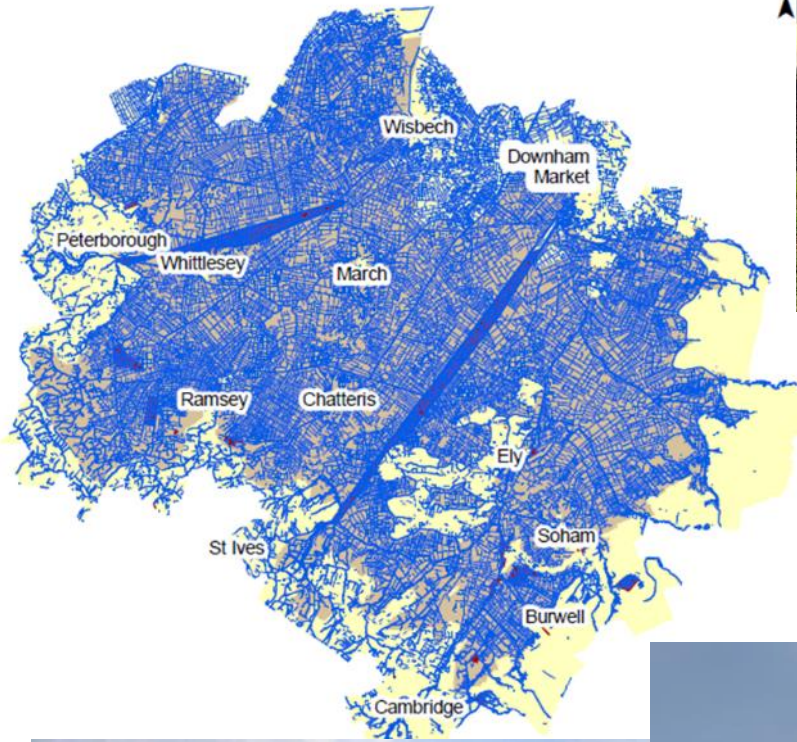
FENS
BIOSPHERE

Fens Biosphere geography

(Draft, pending further consultation)



The Blue Network





Agriculture: A Success Story



FENS
BIOSPHERE

Delivering for Britain

Food and farming in the Fens



500,000

PEOPLE LIVE IN THE FENS

The Fens: Delivering for Britain

80,000

PEOPLE ARE EMPLOYED,
FROM FARM TO FORK,
WITHIN THE FENS



£3.1 billion

THE VALUE OF THE FOOD
CHAIN IN THE FENS



21%

OF ENGLAND'S BULBS AND FLOWERS ARE
GROWN IN THE FENS



3,800 miles

OF WATERCOURSES ARE
MAINTAINED BY INTERNAL
DRAINAGE BOARDS



286

PUMPING STATIONS PROTECT
THE FENS FROM FLOODING



33%

OF ENGLAND'S FRESH
VEGETABLES ARE GROWN HERE

90%

OF FENS' FARMLAND IS GRADE 1 OR 2



428,000

UK HOMES CAN BE SUPPLIED
BY SOLAR AND WIND ENERGY
GENERATED HERE



13,000

DIFFERENT ANIMAL AND
PLANT SPECIES ARE
FOUND IN THE FENS



FUTURE-PROOFING The Fens' Assets

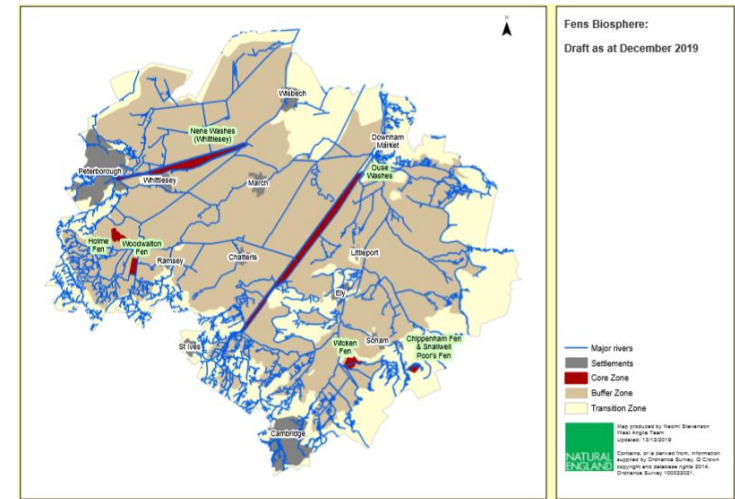
Building Resilience

Across **Economy - Environment - Communities**

World-Class Agri-Industry

World-Renowned Wetlands

World-Class Knowledge



Whittlesey – cultural and natural assets



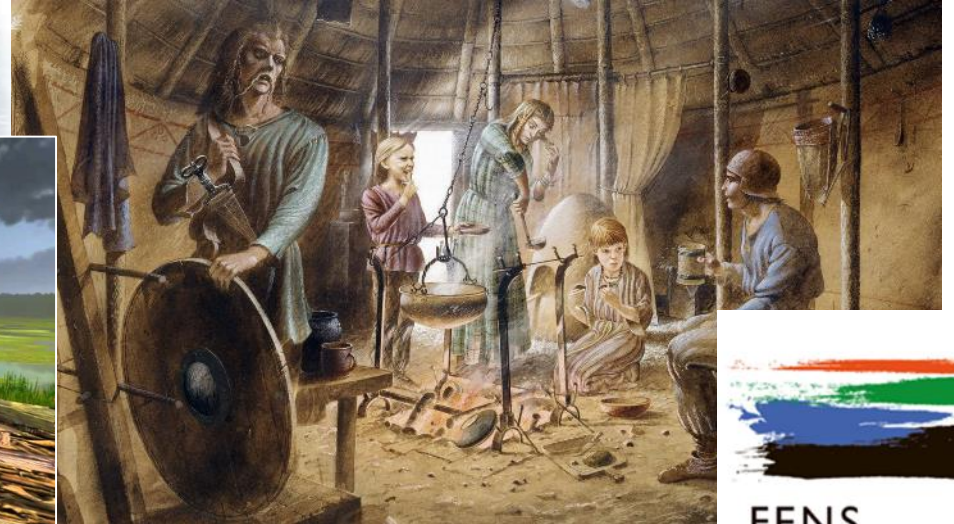
Whittlesey – cultural and natural assets



FENS
BIOSPHERE

The Fens – the first occupants

Flag Fen and Must Farm



Whittlesey: Growing Fenland and Heritage Investment

[What's On](#) > [Arts and Entertainment](#)

Funding bids for new visitor centre and heritage walk in Whittlesey to be submitted

Funding bids for a new visitor centre and heritage walk in Whittlesey are to be submitted later this month.



By **Joel Lamy**
Sunday, 8th November 2020, 9:33 am



WHERE THE NATION PLAYS



[News](#) > [Politics](#) > [Council](#)

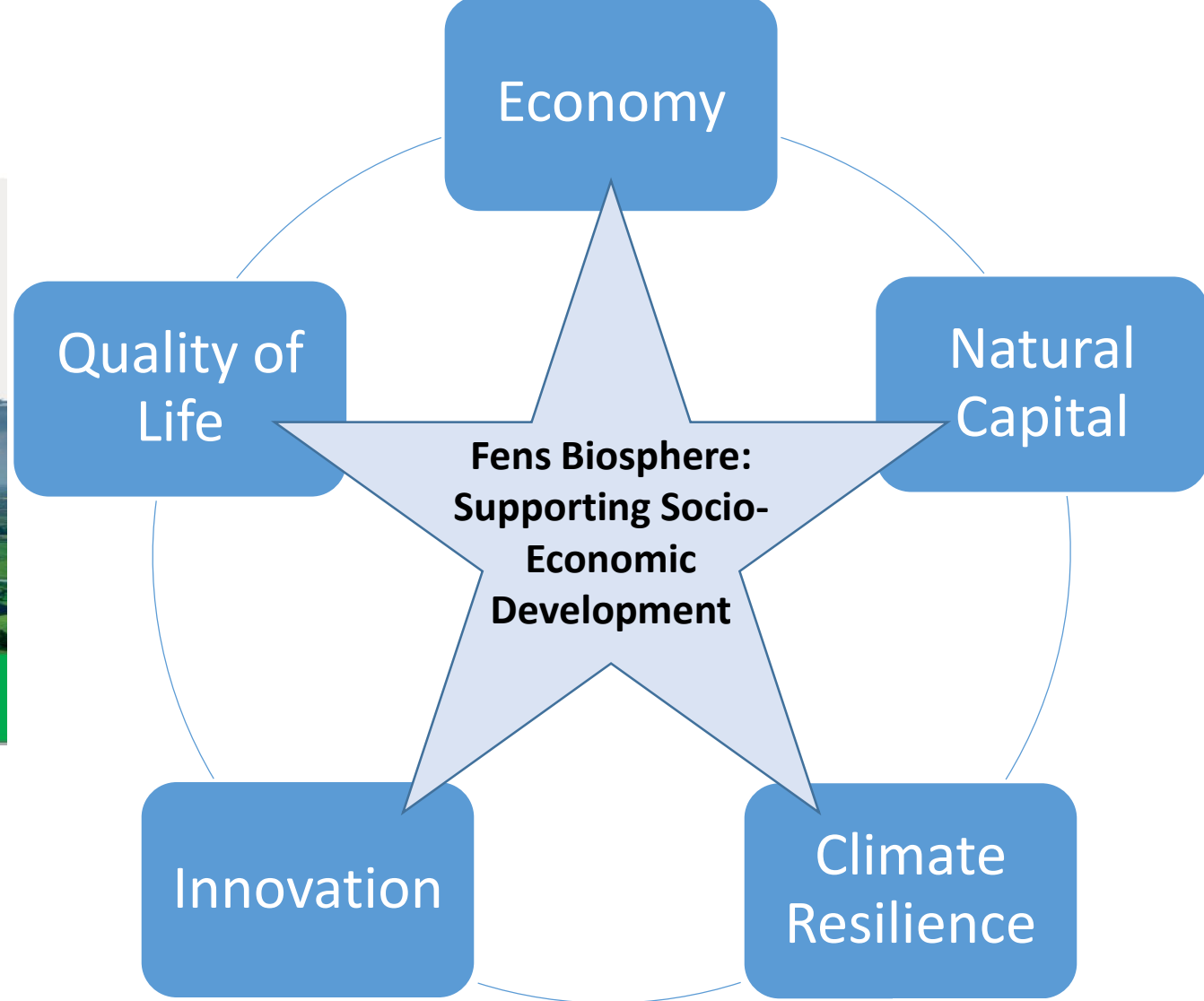
Ambitious 'masterplans' developed to reinvigorate Whittlesey, March and Chatteris

Fenland residents are being invited to have their say on ambitious plans to reinvigorate the district's market towns and secure increased investment in their futures.

By **The Newsroom**
Saturday, 15th June 2019, 11:51 am



**FENS
BIOSPHERE**



Cumulus Consultants,
***Social and Economic Value
of a Biosphere for the Fens***
– Report & summary leaflet

<https://www.fensbiosphere.org.uk/resources-advice/reports-and-downloads/>

- Bringing Partners together
- Sharing Best Practice
- Levering in Funding for Projects

What **BENEFITS** would a **Fens Biosphere** bring?

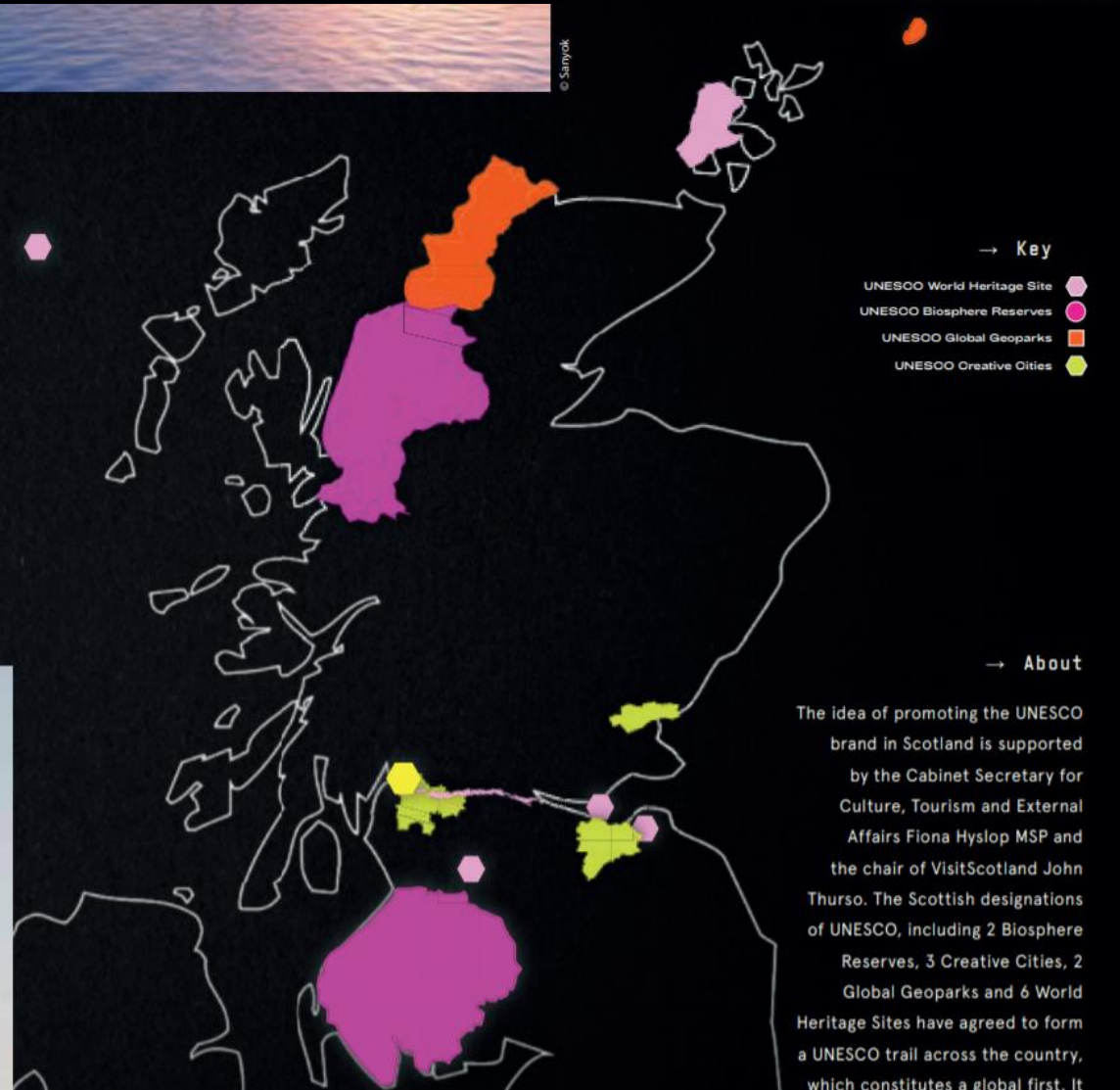
- ✓ **Global Recognition:** International Accolade
- ✓ **Boost to Economy:** Identity Branding & Produce Marketing;
Green Economy & Low-Carbon Agriculture Investment
- ✓ **Thriving Communities:** Advice Hub - Community Resilience
- ✓ **Sector Coordination:** Best Practice Resource Management;
Sustainable Development; a Healthy Natural Environment



The UNESCO National Trail in Scotland



© Sanyok



Fenland Identity

Promote Fenland & its Produce

Interreg 
EUROPEAN UNION

France (Channel Manche) England

BioCultural Heritage Tourism

European Regional Development Fund



FENS
BIOSPHERE



Fenland Identity

Promote
Fenland & its
Produce

The
BIOSPHERE ISLE OF MAN
Pledge

THIS SIGNIFIES THAT

PLEDGES TO HELP:

- protect our natural resources
- develop our economy in a sustainable way
- support and promote our cultural heritage
- make our environmental impact positive wherever possible
- engage with the local community
- promote our outstanding living landscape and seascape through active involvement with UNESCO Biosphere Isle of Man

UNESCO
BIOSPHERE
ISLE OF MAN

**FENS
BIOSPHERE**



LOCAL NATURE RECOVERY TOOLKIT

SEPTEMBER 2020

VERSION 3

Community Resilience
Enable
Community
Action

Natural Cambridgeshire
putting nature at the heart

Doubling Nature

A Vision for the Natural Future
of Cambridgeshire &
Peterborough
in 2050

Charter for Trees, Woods and People

A guide for parish, town
and community councils

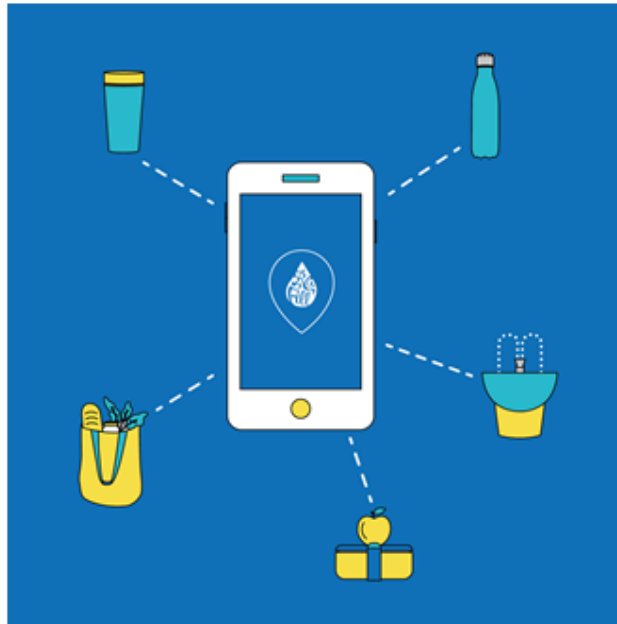


Community Resilience

Enable
Community
Action

Refill Isle of Man expands

Refill Isle of Man is expanding. The free-to-use app now points users to premises offering refills to hot drinks cups, lunchboxes, cleaning products and groceries as well as cold tap water. Sign up for the first time or contact us to expand your entry and help the fight against single-use plastic production and pollution.



Refill expands



FENS
BIOSPHERE

*“The Cambridgeshire fens are one of our most significant landscapes, full of history and meaning yet sadly diminished in their value for nature. We need to put that right, by **pursuing a vision for sustainable land use that works for people, nature and the economy in the long term.** The Fens Biosphere project provides an exciting opportunity to find solutions for this incredible landscape that respect the past and honour the future. I’m delighted to be involved.”*



Dame Fiona Reynolds,
Master of Emmanuel College Cambridge
and former DG National Trust
Fens Biosphere Ambassador



FENS
BIOSPHERE



- Your input sought
- 13 Jan Virtual Conference

fensbiosphere.org.uk



Cambridgeshire **ACRE**

Mark.Nokkert@cambsacre.org.uk
Rachael.Brown@cambsacre.org.uk



[@fensbiosphere](https://twitter.com/fensbiosphere)

