

- Activity
- Chat
- Teams
- Meetings
- Calls
- Files
- ...
- Apps
- Help

NWAngliaFT Annual Public Meeting



Leave



North West Anglia
NHS Foundation Trust

Tuesday 6 October 2020

Annual Public Meeting

North West Anglia NHS Foundation Trust

Welcome!



▶ 🔊 🗣️ LIVE 0:32 / 1:16




NWAngliaFT Annual Public Meeting

Agenda for this evening

- 6.00pm: Welcome – **Rob Hughes, Chairman and Caroline Walker, Deputy CEO**
- 6.05pm: *Presentation:* Our Trust response to the Covid-19 pandemic – **Dr Kanchan Rege, Chief Medical Officer**
- 6.15pm: *Presentation:* Annual Report and Accounts 2019-20 – **Caroline Walker, Chief Executive Officer**
- 6.30pm: Council of Governors' response to the Annual Report and Accounts 2019-20 – **Rev Kevin Burdett, Lead Governor**
- 6.35pm: Question-and-Answer session
- 6.45pm: Close



NWAngliaFT Annual Public Meeting




The SARS Cov-2 pandemic

The NWAngliaFT story so far

Dr Kanchan Rege

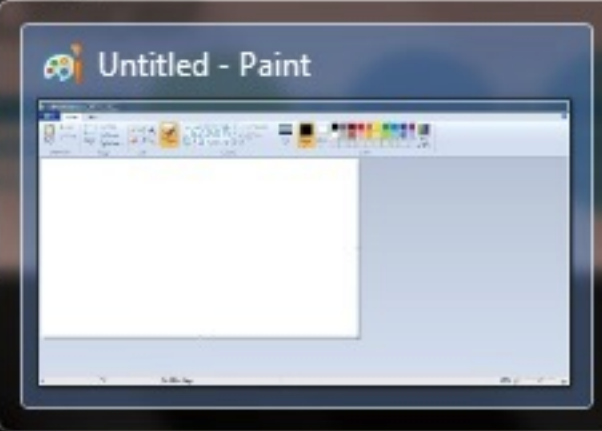
Chief Medical Officer




Dr Kanchan Rege
 Chief Medical Officer
 and Deputy Chief
 Executive Officer

OUTSTANDING

Untitled - Paint



NWAngliaFT Annual Public Meeting

Nursing staff



Supplies



Communications



COMMUNICATIONS (NORTH WEST ANGLIA NHS FOUNDATION TRUST)
Coronavirus update - Friday 2 October 2020

Coronavirus Update – 02.10.20

Latest Trust figures
Total positive cases so far (cumulative): **Hinchingbrooke: 344 Peterborough/Stamford: 607 Total: 951**
Current positives in the Trust: **Hinchingbrooke: 0 Peterborough: 6 Stamford: 0 Total: 6**
New positive cases in the past 24 hours: **Hinchingbrooke: 0 Peterborough: 2 Stamford: 0 Total: 2**
New nosocomial (hospital acquired) cases in the past 24 hours: **Hinchingbrooke: 0 Peterborough: 0 Stamford: 0 Total: 0** (included in new positive cases in last 24hrs)
Number of deaths (cumulative): **Hinchingbrooke: 103 Peterborough: 156 Total: 262**
These figures are subject to change following validation.

NHS Test and Trace app
The NHS website states that if you work in an area where you are wearing PPE or behind a Perspex screen (or equivalent) staff are able to **turn off** their Bluetooth. When staff are travelling around the building and are not in PPE then Bluetooth should be **switched on**. For further information you can visit the [NHS app website](#).

Mask Fit Testing Registers
If you have been Mask Fit Tested, for legal reasons your records must appear as a competency on ESR – please check your records and if the information does not appear please return to the person who did your Fit Testing and ask them to ensure that your information is sent to the Health & Safety Team as a matter of urgency. Information required is as follows:

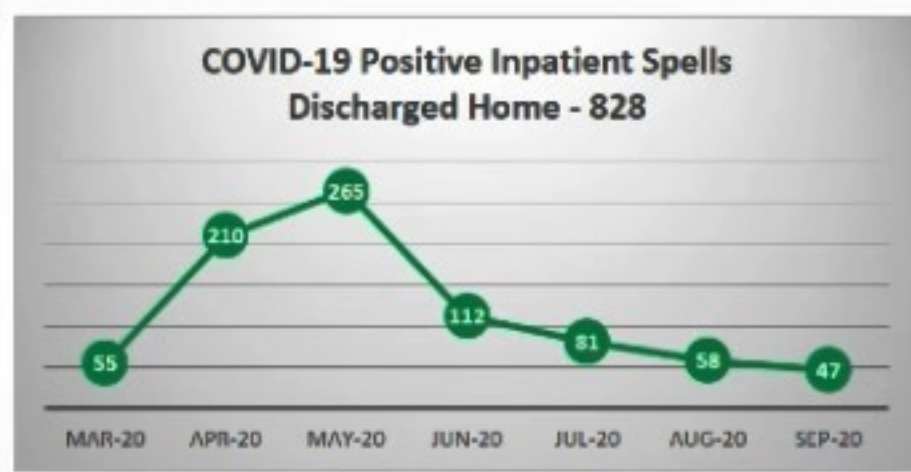
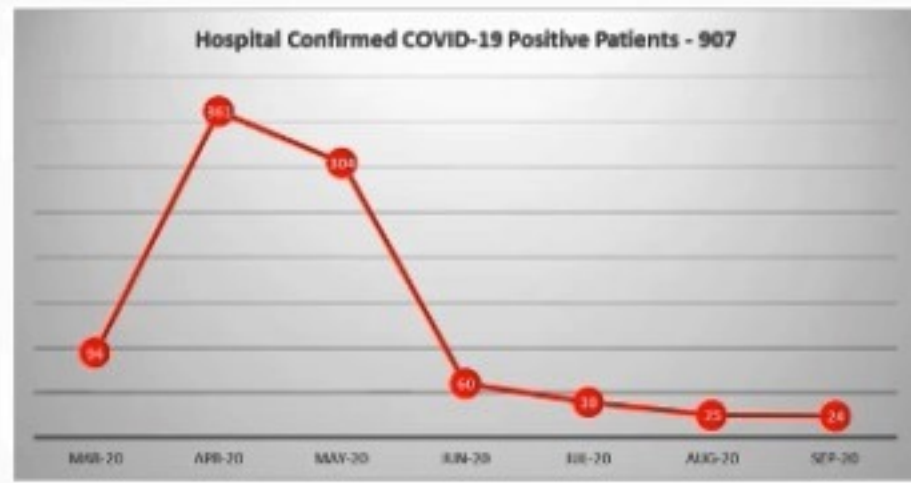
- Name
- Job Title
- Department
- Date of Fit Test
- Type of Mask Fit Tested for
- Pass or Fail

Information should be forwarded to the following email address: wwwstaff.health@nhs.uk/whbookings@nhs.net

Dr Kanchan Rege
Chief Medical Officer
and Deputy Chief
Executive Officer

OUTSTANDING

Information Technology (IT)



Where appropriate, you can attend your consultation online via a video call. Video calling is as convenient as a phone call, with the added value of face-to-face communication. It can save you time and money, and brings your care closer to home.

Dr Kanchan Rege
 Chief Medical Officer
 and Deputy Chief
 Executive Officer

OUTSTANDING

Activity
 Chat
 Teams
 Meetings
 Calls
 Files
 Apps
 Help

Windows taskbar with icons for Start, Task View, and various applications including Microsoft Word, Outlook, Firefox, and Teams.


NWAngliaFT Annual Public Meeting

The public



Dr Kanchan Rege
 Chief Medical Officer
 and Deputy Chief
 Executive Officer

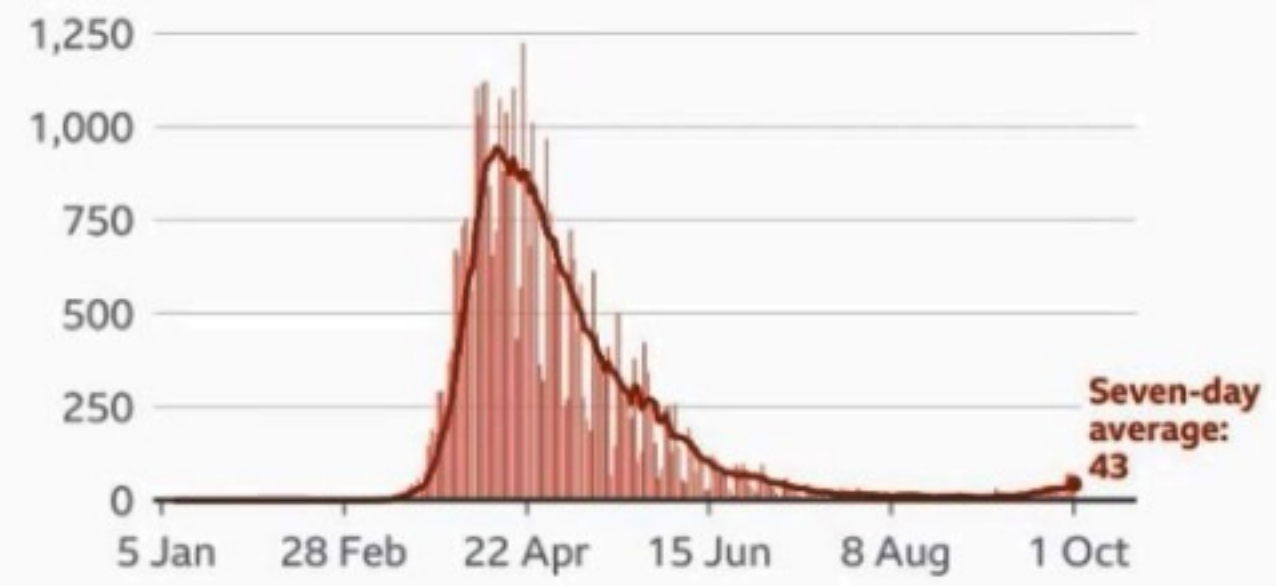
OUTSTANDING




NWAngliaFT Annual Public Meeting

Second wave

UK daily reported deaths with coronavirus



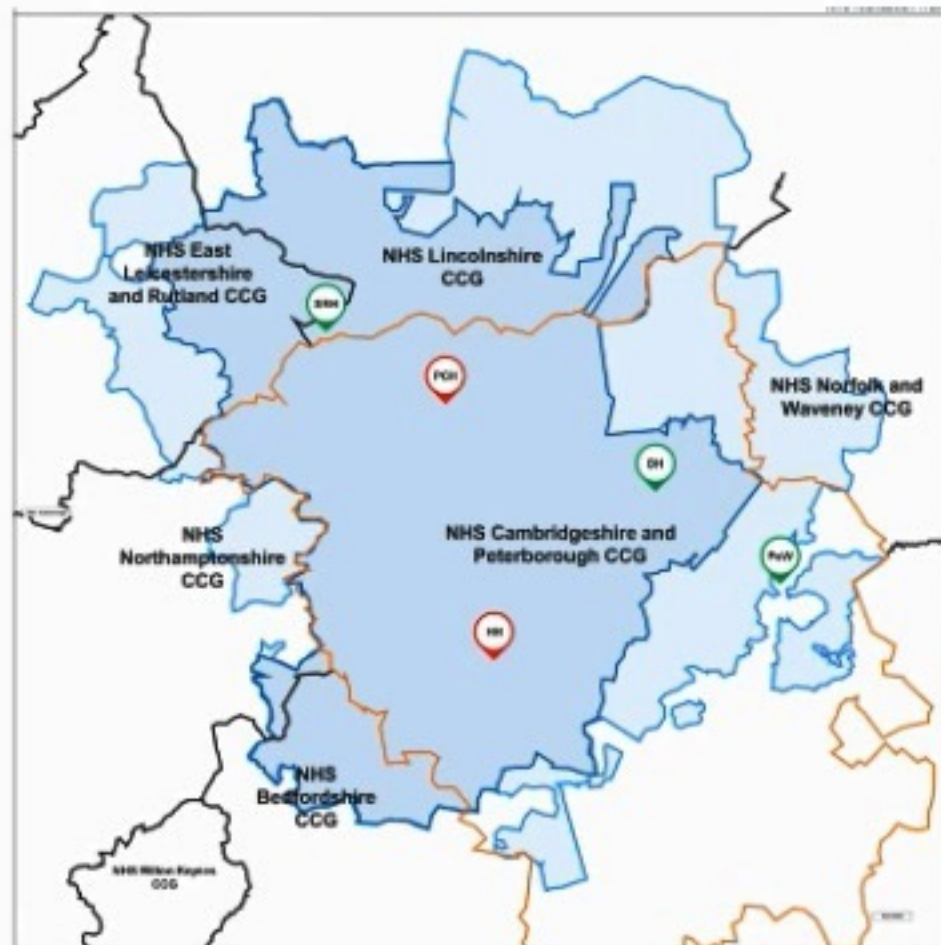
Figures include only those who tested positive for coronavirus. Deaths recorded up to 30 Sep 17:00 BST

Dr Kanchan Rege
 Chief Medical Officer
 and Deputy Chief
 Executive Officer

OUTSTANDING



About us: Facts and figures



- Serving a diverse and growing population of **750,000**
- **3** main clinical commissioning groups – Cambs and Pboro CCG, Lincs CCG, and East Leics and Rutland CCG
- **6,789** staff (8.9% more than 2018-19)
- **567** volunteers gave **48,465** hours of their time in 2019-20



About us: Staffing numbers

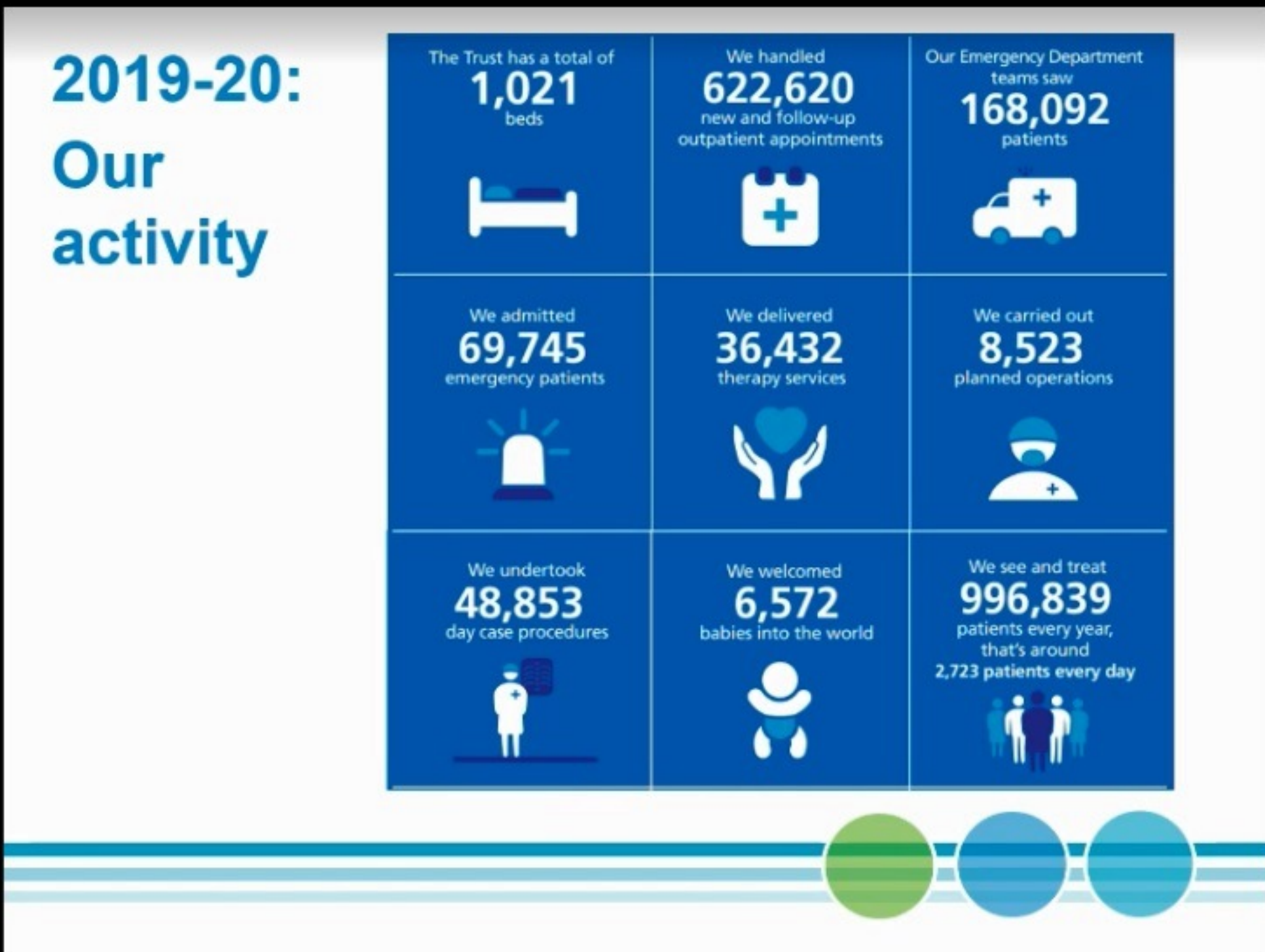


Including:

- **1,910** nurses
 - **260** midwives
 - **787** doctors and consultants
 - **356** AHP's
 - **1,386** admin and clerical
 - **567** volunteers
- Our workforce also includes service provider partner staff for cleaning, catering and associated services on each site



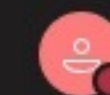
NWAngliaFT Annual Public Meeting



Behind the numbers:

- Continued growth in demand for urgent care:
 - **16% rise** in emergency admissions (69,745 in 2019-20 compared with 60,108 in 2018-19)
 - **4.6% rise** in emergency attendances at our two emergency departments and minor injuries unit at Stamford Hospital (168,092 in 2019-20 compared with 160,649 in 2018-19)
 - **11.34% increase** in ambulatory care unit attendances (36,002 in 2019-20 compared with 32,334 in 2018-19)
- December 2019 was the busiest month on record for A&E attendances and ambulance call-outs across the country





Behind the numbers:

- Decrease in births across both maternity units
 - **2.2% fewer** babies delivered (6,572 in 2019-20, compared with 6,720 in 2018-19)
- Decrease in elective activity (planned operations – including Covid-19 impact)
 - **20.5% fewer** operations carried out (8,523 in 2019-20, compared with 10,727 in 2018-19)
 - **6.17% fewer** day case procedures performed (48,853 in 2019-20, compared with 52,064 in 2018-19)
- Decrease in therapy services
 - **17.2% decrease** in patient activity (36,432 appointments in 2019-20, compared with 44,201 in 2018-19)



Activity



Chat



Teams



Meetings



Calls



Files



Apps



Help





Looking ahead

- The estimated growth in demand for hospital care suggests that by 2024:
 - ED attendances will grow by around a quarter (23%)
 - Emergency admissions will increase at a similar rate (22%) placing significant pressure on our beds
 - We will double (97% increase) the number of people seen in ambulatory care for urgent medical conditions that can be treated without requiring a bed
 - Demand for outpatients will increase significantly and therefore we will need to reduce face-to-face appointments and use more 'virtual' appointments such as Skype and advice to GPs – a mode already in use, and in line with the NHS Long Term Plan



The year's headlines: Quality

- **Sepsis** – increased screening rates and training sessions by Sepsis Specialist Nurse team
- **Children's Safeguarding** – roll out of new CP-IS system across Trust as part of a system-wide collaboration and sustained achievement of level 3 specialist training for staff
- **Maternity** – new clinical supervision process for all midwives to use for mandatory training introduced, and good working relationship with Maternity Voices Partnership
- More than 90% of **complaints** responded to within 30 days and 100% in maximum timeframe of 40 days



The year's headlines: Quality

- Rated as 'Requires Improvement' by the CQC following inspection in July and August 2019

	Safe	Effective	Caring	Responsive	Well-led	Overall
Peterborough City Hospital	Requires improvement ↓ Dec 2019	Requires improvement ↓ Dec 2019	Good ↔ Dec 2019	Good ↔ Dec 2019	Requires improvement ↓ Dec 2019	Requires improvement ↓ Dec 2019
Hinchingsbrooke Hospital	Requires improvement ↔ Dec 2019	Requires improvement ↔ Dec 2019	Good ↔ Dec 2019	Requires improvement ↔ Dec 2019	Requires improvement ↔ Dec 2019	Requires improvement ↔ Dec 2019
Stamford and Rutland Hospital	Good ↔ Dec 2019	Requires improvement ↔ Dec 2019	Good ↔ Dec 2019	Good ↔ Dec 2019	Good ↔ Dec 2019	Good ↔ Dec 2019
Overall trust	Requires improvement ↔ Dec 2019	Requires improvement ↔ Dec 2019	Good ↔ Dec 2019	Requires improvement ↓ Dec 2019	Requires improvement ↔ Dec 2019	Requires improvement ↔ Dec 2019

- Actions highlighted by the CQC to **improve care** were implemented across the Trust



The year's headlines: Finance

- Surplus recorded - **£0.4m**, compared with a deficit of £46.5m in 2018-19 (and 2019-20 prediction of £5.7m deficit)
- Unlike previous years, the activity demand for the Trust did not exceed our plan – which has enabled the better management of costs
- **£18m** cost improvement plan also delivered
- National support in place for Trusts as they manage the costs of responding to the Covid-19 pandemic by year end



Some of the year's highlights

- Successful implementation of new Patient Administration System
- Financial surplus delivered
- Welcoming 100 staff from Cambridgeshire Community Services when the management of paediatric services at Hinchingsbrooke transferred to NWAngliaFT in April 2019
- Free public wifi available
- Specialist décor on wards to help improve experience of patients with dementia
- First cohort of young volunteers (aged 16-24) joined us



Summary of the year's challenges

- Growth in emergency activity
- Performance against the four-hour waiting time standard for emergency patients
- Ongoing issues with discharge of patients into other health and social care facilities
- Recruiting substantive staff – some specialities continue to see a national shortage
- Waiting lists growth as a result of services on hold during first few months of pandemic





Looking forward to 2020-21

- Deliver Phase 3 of the Covid-19 recovery plan
- Deliver second year of Estates Strategy:
 - Develop business case for replacement theatres and additional wards at Hinchingsbrooke Hospital (Phase 2)
 - Additional bed capacity at Peterborough City Hospital
 - Car parking improvement plan for all sites
 - Disposal of surplus land to the west of the Stamford Hospital site
- Deliver IT Strategy to support the Clinical Strategy



Activity



Chat



Teams



Meetings



Calls



Files



Apps



Help



- Activity
- Chat
- Teams
- Meetings
- Calls
- Files
- ...
- Apps
- Help

NWAngliaFT Annual Public Meeting

Need help? Leave

Council of Governors' response to
the Annual Report and Accounts

The Rev Kevin Burdett

Lead Governor

