



Whittlesey Town Council Update

August 2020

This month:

Page 1: Street Pride and community groups

Pages 1-2: Environmental Health

Pages 2-4: Streetscene

Page 4: Planning Enforcement

Page 5: Open Spaces

Page 6: Useful Contacts

Appendix – CCTV Report

Street Pride and Community Groups

Whilst some government restrictions have eased in relation to COVID-19, it is still the case that no more than six people can meet outside and take part in outdoor activities whilst also adhering to strict social distancing guidelines.

With this in mind, during July, a couple of individuals from Whittlesey Street Pride decided to resume litter picking alone.



March Town Council Update

August 2020

Environmental Health

The team continue to support local businesses and respond to enquiries from customers and employers during the Coronavirus (Covid-19) pandemic. The focus is to assist businesses to remain open as safely as possible by helping them with the required risk assessment and ensuring they have adequate controls in place to ensure safety not only for their staff but their customers too.

More than 300 local businesses have been given direct support and advice on re-opening safely. Council webpages are regularly updated to sure that local businesses are getting the most up to date advice.

The wearing of masks in shops became law on Friday 24th July and although the Police are responsible to address non-compliance the Council will be able to advise where necessary.

In August food hygiene inspections will recommence although they will be done remotely to start with and visits only conducted where issues are noted.

Whittlesey and surrounding villages Performance Report : July 2020

Food Safety Inspection Plan:	
Number of food safety interventions completed	0
Number of Food Safety Warning Letters/ Notices sent	0
Number of Food Safety Advice letters sent	4
Requests for Service	
Total number of Requests for Service received in 2020 /2021	285
Number of Requests for Service received in July 2020	85
Number responded to within 5 working days	83

Streetscene

Performance	
Total time out and about on patrol in the local community:	70hrs in Whittlesey and 5hrs in Whittlesey villages
Number of cleansing inspections carried out:	15
Percentage of cleansing inspections found to be of a suitable standard:	100%

Tidy Fenland – Green Dog Walkers Campaign

We have been out patrolling this month, focusing on the open spaces and alleyways. The school holidays and warm weather days has seen our opens spaces being very well visited. With this in mind Street Scene officers are out and supporting the community at this very important time. Showing a visible presence has been our focus and whilst here we have been, albeit at a social distance, talking to dog walkers to promote responsible dog ownership.

The bag dispenser at the Manor has been topped up by our community volunteer and we have put up more dog signs around the town in areas which have been feedback to us to remind dog walkers they can be used to dispose of their dogs waste. Dog fouling which has either been seen or reported has been removed. We have had more of a presence in key areas such as The Bower, The Walk, Coates, Eastrea and the Manor Leisure Centre.

Fly tipping

The total number of fly tipping instances recorded for June, 2020 is 101.

This, broken down into areas, is as follows:

Chatteris	3
March	16
Whittlesey	18
Wisbech	18
Villages	46
Total	101

The majority of the fly tipping was household related with 51 instances, 12 were commercial waste, and 11 green waste.

The Street Scene team remains proactive in fly tipping prevention and investigations. During June, Street Scene Officers attended 25 of the fly tipping sites across the district to look for evidence.

Street Scene Actions

- 2 Abandoned vehicles have been reported and investigated in Whittlesey during the month of June. 1 has resulted in needing to be removed by our contractor.
- 2 cleansing requests were raised in relation to hazardous waste, overflowing litter bins and excessive levels of litter in the town.
- 6 advertising fly posters have been removed from the town centre.
- Memorial Safety Inspections have been carried out this month in Whittlesey Cemetery all were found to be safe and we had no concerns.
- 3 businesses in the town have been visited on behalf of Environmental Health in Whittlesey in relation to vermin and waste accumulations. Monitoring this is ongoing.
- Street Scene have continued to support our cleansing colleagues with litter picking, emptying street litter bins and removing fly tipping in and around the town and villages. This is to ensure we are still offering a good front line service to the public.
- We are continuing to be present in the town to be a point of contact for the community who may have any COVID19 related enquiries.

Markets

Changes to shopping habits have seen the markets experience an increase in popularity over the last few months. Traders have had increased record sales and feedback from the public is that the open air and still friendly atmosphere, makes them feel safe. The age range has changed to; bringing a much younger custom that may never had visited the market before.

We have had a record number of new trader enquires and have welcomed 1 new trader to the Market in Whittlesey.

The traders have also been supported through applying for government grants which has provided financial support to their businesses. All on our markets who applied were successful. A total of 21 traders (including those on Wisbech) had a grant paid out.

- *'Thank you so much for your help I would never have applied without your help as I do not have access to a computer – this money will make all the difference' – Whittlesey trader.*

Planning Enforcement

Performance	
Service Requests received in July 2020	6
Total number of Service Requests in 2020-21	15
Cases Closed this month	3 (6 in the year to date)
Notices Served	0

--	--

With regard to the cases closed in July:

- 1 case was found to be a matter for the county council as the enforcing authority.
- 1 case was closed as the investigation concluded that no breach of planning control was found to have taken place.
- In 1 case the owner / occupier undertook actions to voluntarily remedy the breach.

Open Spaces

The effect of Covid-19 on the operation of the Open Spaces begins to lessen. All play areas re-opened on July 4th, though social distancing remains in place. Some vandalism had been reported. Play area inspections continue on a weekly basis. Should a second shutdown be required we have the steps in place to undertake this at short notice.

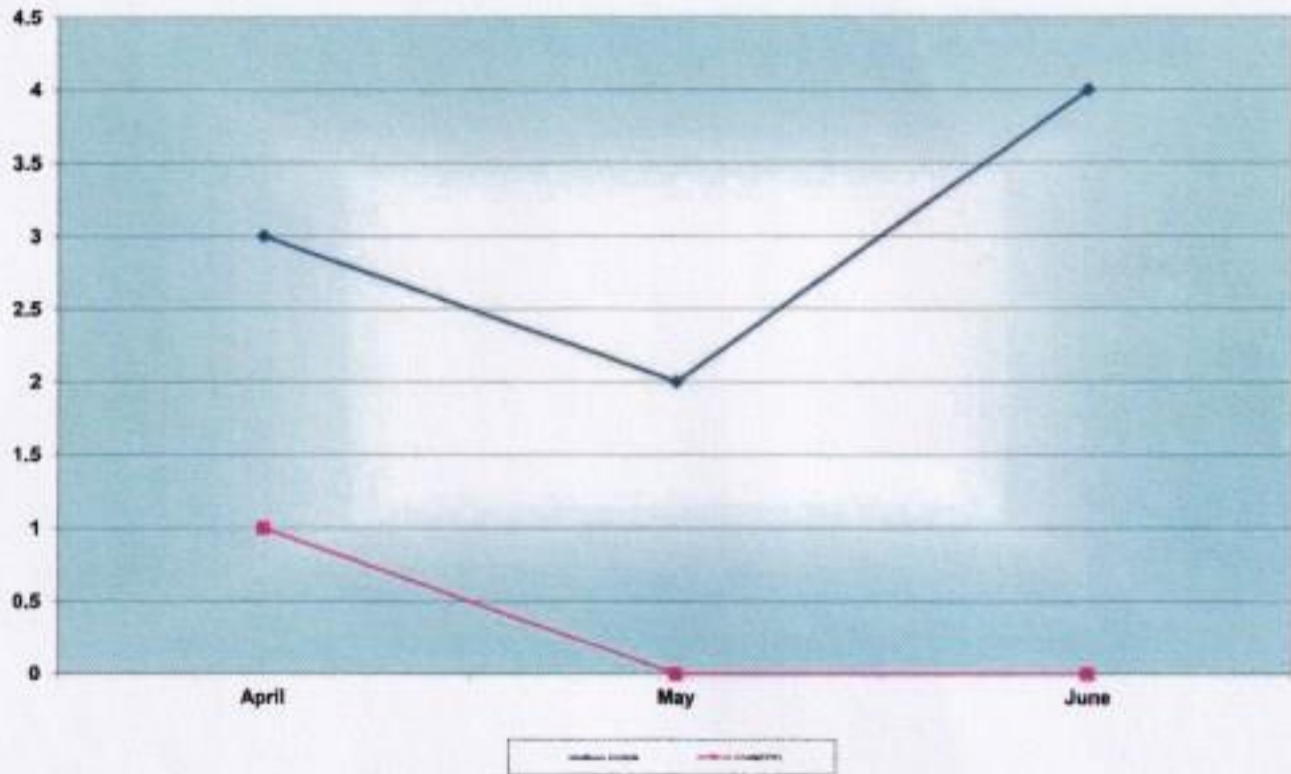
The grass cutting operation has continued uninterrupted with Tivoli continuing a very good start to the season and the mix of warm and wet weather has seen the parks and open spaces looking at their finest. Hedge cutting commenced at the start of July and praise for the quality of work to date has been received and appreciated. A number of tree works have been identified and will be undertaken through the contractor at the earliest opportunity.

In the town, the following took place:

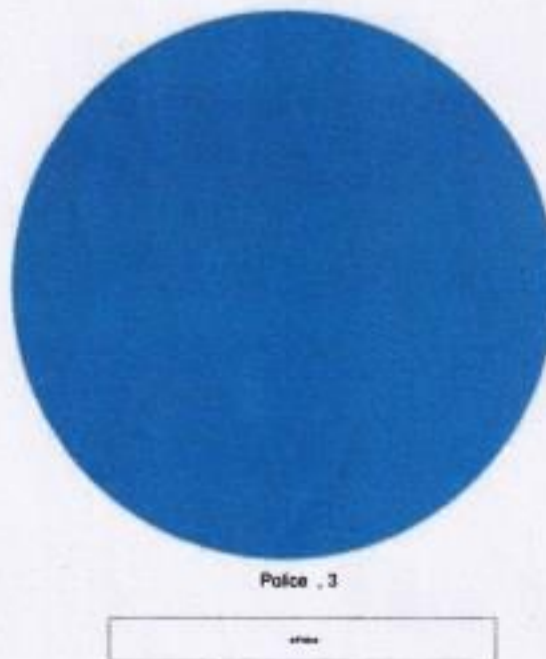
- Claygate seeded with wildflower (re-done)
- Snowley Park play areas – tenders out and invitations sent to would-be contractors. 4 visits to date – returns on 31/7
- Foxhole repairs – Whittlesey Cemetery
- Eastrea Play area repairs
- Mulberry – fallen tree
- Saxon – fallen tree
- Compound clearance – Manor LC
- Plot levelling in Whittlesey Cemetery

Whittlesey Town Council CCTV update June 2020

Number of Incidents and Arrests for Whittlesey
From April - June 2020



Incidents by Call Source for Whittlesey for June



Data Chart of Performance Figures for previous three months

	April	May	June	Total
Total Incidents Recorded (Whittlesey only)	3	2	4	9
Arrests / Fixed Penalty Notices (Whittlesey only)	1	0	0	1
CCTV Patrols Completed (All Towns)	546	623	573	1742

The above data is based upon incidents and arrests recorded by Safer Fenland CCTV and data supplied by Cambridgeshire Constabulary, to provide the most accurate figures possible at the time of publishing.