



## Whittlesey Town Council Update

June 2020

### This month:

Page 1: **Street Pride and community groups**

Pages 1-2:  
**Environmental Health**

Page 2 & 3: **Streetscene**

Page 4: **Planning Enforcement**

Page 4: **Open Spaces**

Page 5: **Useful Contacts**

Appendix – **CCTV Report**

### **Street Pride and Community Groups**

Due to ongoing Covid-19 pandemic events, groups are still not conducting any activities at this time. Volunteers are eager to resume activities and whilst some restrictions have been lifted, our recommendation is still that street pride activities including lone activities do not go ahead.

The Street Pride Co-ordinator has been sending challenges to the volunteers to do at home. So far this has included a word search and making a bird feeder from recycled materials. A quiz has also been designed which is intended for the groups to do together over Zoom or Facebook Live so they can all still interact with each other.

### **Environmental Health**

The Environmental Health Team are continuing most of their service delivery alongside increasing requests for service relating to Covid-19 concerns. With many more people at home bonfire smoke and noise from amplified music have been the source of many more complaints to the service.

Additionally many commercial shop owners are contacting officers for good health and safety advice for when they re-open. Maintaining safe distancing inside the shop is their main concern not only for their staff but their customers too. We have had over 200 requests for service relating to Covid-19 matters alone since the lockdown started. With more shops opening in June a business support pack is being put together to help businesses to be Covid compliant, which is a requirement.

| Whittlesey and surrounding villages<br>Performance Report : April 2020  |     |
|---|-----|
| <b>Food Safety Inspection Plan:</b><br><b>The Food Standards Agency guidance is for high risk inspections to be completed only.</b> |     |
| Number of food safety interventions completed   | 1   |
| Number of Food Safety Warning Letters/ Notices sent   | 1   |
| Number of Food Safety Advice letters sent   | 1   |
| <b>Food Hygiene Rating Scheme</b>   |     |
| Number of Food Safety Premises whose score went UP  | 0   |
| Number of Food Safety Premises whose score went DOWN  | 1   |
| Number of Food Safety Premises whose score STAYED THE SAME  | 0   |
| <b>Requests for Service</b>   |     |
| Total number of Requests for Service <b>received in 2020 /2021</b>  | 100 |
| Number of Requests for Service received in <b>April and May 2020</b>  | 100 |
| Number responded to <b>within 5 working days</b>  | 100 |

## Streetscene

| Performance   |        |
|---|--------|
| Total time out and about on patrol in the local community:              | 60 hrs |
| Number of cleansing inspections carried out:                            | 15     |
| Percentage of cleansing inspections found to be of a suitable standard: | 100%   |

### Tidy Fenland Dog Campaign

Street Scene officers are still offering support to the community and are working (albeit with social distancing) as normal. We will continue to show a presence in open spaces to encourage responsible dog ownership.

During May, dog fouling patrols were undertaken in The Manor Leisure, The Bower, The Walk. Dog patrols have also been carried out in Turves, Coates, Eastrea and Benwick.

We are continuing to replenish the dog bags in the dispenser in The Manor Leisure and will look to renew any damaged or missing signage.

We are currently consulting the public regarding a continuation of the Dog Control Public Spaces Protection Order (PSPO) across Fenland. The team have been out to all open spaces, cemeteries and closed churchyards, checking that signage is still in place and in good condition.

### Tidy Fenland – Fly Tipping

Up to 22<sup>nd</sup> May 2020 there have been 73 instances of fly tipping. Broken down into locations:

|            |    |               |   |
|------------|----|---------------|---|
| Chatteris  | 1  | Eastrea       | 0 |
| March      | 9  | Coates        | 0 |
| Whittlesey | 10 | Turves        | 3 |
| Wisbech    | 23 | Benwick       | 0 |
| Villages   | 30 | Pondersbridge | 0 |

The majority of the fly tipping was household related with 46 instances and 15 commercial waste.

The household recycling centres are now open again but with some restrictions still in place.

The team remains proactive in fly tipping prevention and investigations. During May, Street Scene Officers attended 23 of the fly tipping incidents.

### Street Scene Actions

- 14 cleansing requests were raised in relation to hazardous waste, overflowing litter bins and excessive levels of litter in the town.
- Carried out 4 refuse visits regarding misuse of bins and provided information regarding recycling.
- Carried out numerous visits on behalf of and with Environmental Health colleagues in Whittlesey in relation to businesses being open and social distancing.
- Due to COVID-19 affecting staffing levels within Street Cleansing we have continued to assist the team by litter picking, emptying street litter bins and removing fly tipping in and around the town. This is to ensure we are still offering a good front line service to the public.
- Memorial Safety Inspections have been carried out this month in Whittlesey Cemetery and Wisbech St Mary Cemetery. A total of 1337 inspections have been completed, this resulted in 13 memorials being identified as requiring action to make safe.
- A request for the road sweeper to be sent along Kings Dyke and the layby has been sent to cleansing.

## Planning Enforcement

| Performance                                 |                           |
|---|---------------------------|
| Service Requests received in May 2020       | 1                         |
| Total number of Service Requests in 2020-21 | 3                         |
| Cases Closed this month                     | 0 (2 in the year to date) |
| Notices Served                              | 0                         |

No cases were closed during the month.

## Open Spaces

The effect of Covid-19 on the operation of the Open Spaces continues impact. All play areas are still closed (padlocked where possible), signs have been put up, skate parks remain shut off. Public, have, by and large, obeyed the rules although isolated instances of transgression and some vandalism have been reported.

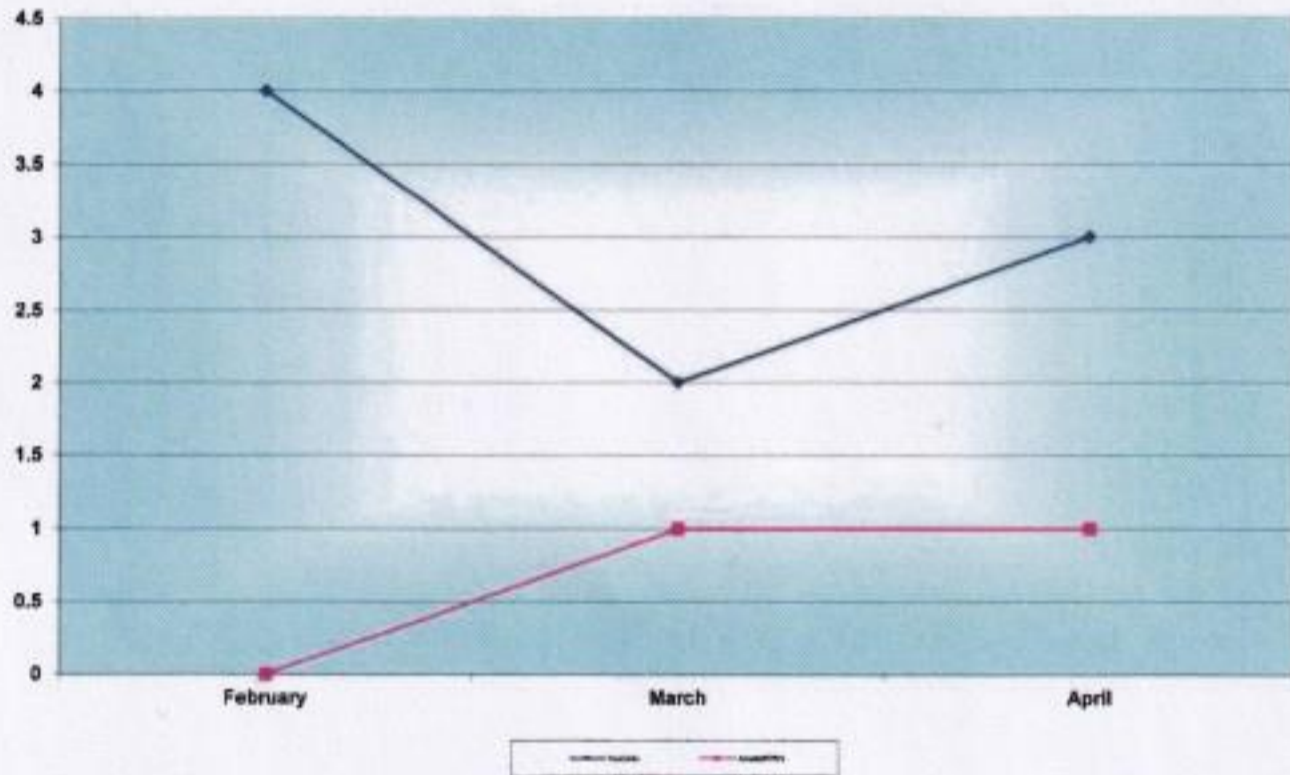
The grass cutting operation, however, has continued with Tivoli maintaining a very good start to the season and six weeks of warm weather has seen the parks and open spaces looking at their finest. Some challenges to staff whilst carrying out their work have been received on the basis of whether their work is essential but Tivoli and FDC have followed government guidelines – Communities Secretary, Robert Jenrick making it clear that parks must remain open - and common consensus is that their work in keeping the areas in good condition is much appreciated.

In the town, the following took place:

- Claygate seeded with wildflower (had to be re-done)
- Snowley Park play areas – tenders out and invitations sent to would-be contractors. 3 visits to date
- Grave Top Ups
- Mulch delivered for park Run
- Summerville Road (Coates) tidy up

## Whittlesey Town Council CCTV update April 2020

**Number of Incidents and Arrests for Whittlesey  
From February - April 2020**



**Incidents by Call Source for Whittlesey for April**



**Data Chart of Performance Figures for previous three months**

|  | <b>February</b> | <b>March</b> | <b>April</b> | <b>Total</b> |
|--|-----------------|--------------|--------------|--------------|
| <b>Total Incidents Recorded (Whittlesey only)</b>        | <b>4</b>        | <b>2</b>     | <b>3</b>     | <b>9</b>     |
| <b>Arrests / Fixed Penalty Notices (Whittlesey only)</b> | <b>0</b>        | <b>1</b>     | <b>1</b>     | <b>2</b>     |
| <b>CCTV Patrols Completed (All Towns)</b>                | <b>575</b>      | <b>542</b>   | <b>546</b>   | <b>1663</b>  |

The above data is based upon incidents and arrests recorded by Safer Fenland CCTV and data supplied by Cambridgeshire Constabulary, to provide the most accurate figures possible at the time of publishing.