



Whittlesey Town Council Update

February 2020

This month:

Page 1: Street Pride and community groups

Pages 1-2: Environmental Health

Pages 2-3: Streetscene

Pages 3-4: Planning Enforcement

Page 4: Open Spaces

Page 5: Useful Contacts

Appendix – CCTV Report

Street Pride and Community Groups

January was a busy month for Whittlesey Street Pride. The group kicked off the New Year with a litter pick on New Year's Day followed by another two weeks later to coincide with the annual Straw Bear Festival.

The group also welcomed 6 new members to these picks, which was great to hear.

Environmental Health

During December 2019 it became necessary for environmental health officers to accept some voluntary closures at local food premises.

Routine inspections highlighted some urgent needs relating to cleanliness and food safety management systems. Public health and food safety regulations enable officers to offer the food business operator a choice of voluntarily closing, usually for 24 hours to have a deep clean. The alternative would be a court appointment for closure using formal powers. Working together in this way helps maintain good relationships with businesses.

All businesses are now open again and operating with support for officers.

Whittlesey and surrounding villages
Performance Report : January 2020

Food Safety Inspection Plan:	
Number of food safety interventions completed	12
Number of Food Safety Warning Letters/ Notices sent	2
Number of Food Safety Advice letters sent	10
Food Hygiene Rating Scheme	
Number of Food Safety Premises whose score went UP	2
Number of Food Safety Premises whose score went DOWN	2
Number of Food Safety Premises whose score STAYED THE SAME	8
Requests for Service	
Total number of Requests for Service received in 2019 /20	327
Number of Requests for Service received in Dec 2019 and Jan 2020	64
Number responded to within 5 working days	64

Streetscene

Performance	
Total time out and about on patrol in the local community:	48hrs
Number of cleansing inspections carried out:	15
Percentage of cleansing inspections found to be of a suitable standard:	100%

Tidy Ferland – Green Dog Walkers

While out on our dog patrols at the Manor, we continue to receive good feedback from users of the open space about the dog bag dispenser. Members of the Green Dog Walkers have advised that they have continued to see a reduction in dog fouling. They are continuing with their organised community walks and pick up any fouling they see and build a rapport with

other dog walkers to talk about the campaign. We are pleased that this continues to be a friendly approach to tackling dog fouling and there has been no confrontation. The amount of bags being used in the dispenser has been steady suggesting that people are not abusing it or emptying it all out in one go.

The green dog walking champion has been regularly updating the Facebook page and then feeding in comments of interest from members of the public direct to Street Scene.

We have patrolled this month mainly in all our open spaces, the Memorial Garden, The Bower, St Mary's Churchyard, The Walk and Feldale Lakes (Coates).

Tidy Fenland - Fly tipping and Duty of Care

We are unable to report on the fly tipping figures in January at present but will include these in the report for next month.

To continue our proactive work Officers attended 5 fly tipped sites to search for evidence these include household waste Fly tipped at West Delph. Unfortunately no evidence was found but a service requests were raised to remove the waste as soon as possible to avoid attracting further Fly tipping.

Kingdom Enforcement actions this month

- 6 FPNs have been issued by Kingdom during December. 1 was in Whittlesey.
- There have not been any tickets issued for January.

Abandoned Vehicles

- 3 vehicles have been reported and investigated as abandoned in Whittlesey. All were removed by persons unknown when issued with a Notice.

Planning Enforcement

Performance	
Service Requests received in Jan 2020	3
Total number of Service Requests in 2019-20	46
Cases Closed this month	7 (45 in year to date)
Notices Served	0

With regard to the cases closed in the month:

- In 3 cases the owner / occupier took the necessary steps to address the breach of planning control that was identified as having taken place.
- In 3 cases the investigation concluded that no breach of planning control had taken place.
- In 1 case retrospective planning permission was applied for and granted and this the breach of planning control was addressed.

Open Spaces

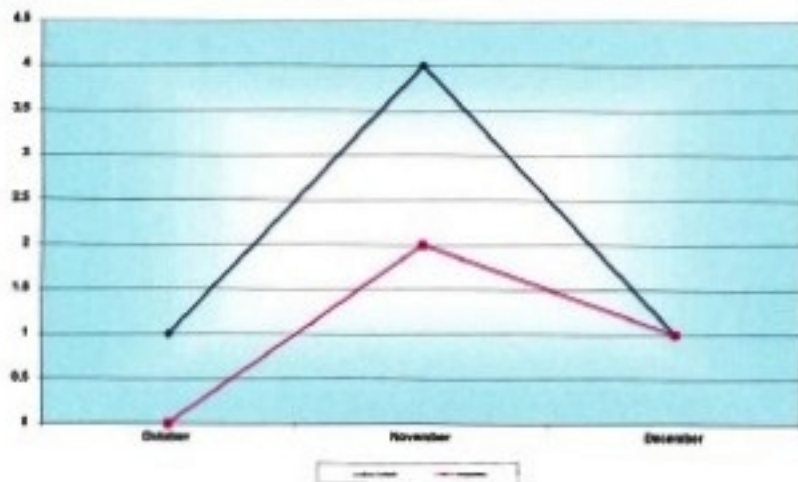
December and January sees the shrubs and hedge maintenance programme being carried out. Tivoli has performed well this year than any previous and, largely, areas have been kept neat and tidy.

Around the town work has taken place at Burdett Grove (play repairs), Claygate (again – further preparation for wildflower planting), Station Road play area (wet pour), Bramble Close (shrubs), Cemetery has been well maintained, verges are under control and the hedge cutting regime has worked well for the autumn/winter (Some hedges received an extra cut earlier in the year).

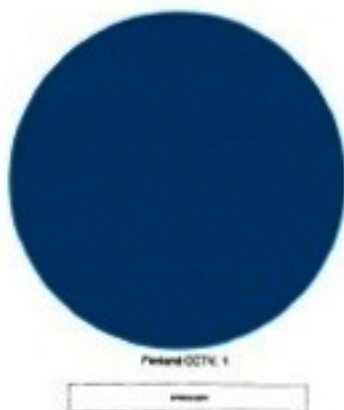
Work to tidy the planters in the Town Square has commenced and the bulbs planted.

Whittlesey Town Council CCTV update December 2019

Number of Incidents and Arrests for Whittlesey From October - December



Incidents by Call Source for Whittlesey for December



Data Chart of Performance Figures for previous three months

	October	November	December	Total
Total Incidents Recorded (Whittlesey only)	1	4	1	6
Arrests / Fixed Penalty Notices (Whittlesey only)	0	2	1	3
Media Reviews Conducted (All Towns)	31	27	21	79
CCTV data taken as Evidence (All Towns)	6	9	5	20
CCTV Patrols Completed (All Towns)	309	301	332	942

The above data is based upon incidents and arrests recorded by Safer Fenland CCTV and data supplied by Cambridgeshire Constabulary, to provide the most accurate figures possible at the time of publishing.