

# Cambridgeshire Insight

Data | Insight | Local

## What is Cambridge Insight?

Cambridgeshire Insight is a shared research knowledge base for the **Cambridgeshire and Peterborough** area. It allows users an easy way to access and share information and research for deeper insights about their local area.

It can be used for:

- Supporting funding bids
- Evidence Building
- Identifying hyper-local need
- Strategic planning
- Understanding your area
- & much more

## Bespoke Profile browser

### Local Parish Profiles

The Parish Profile builder is an interactive report that is set out to help users gain greater insights about their parish across **Cambridgeshire and Peterborough**. Simply choose your parish from the area drop down at the top of the page and it will generate a bespoke report for your parish.

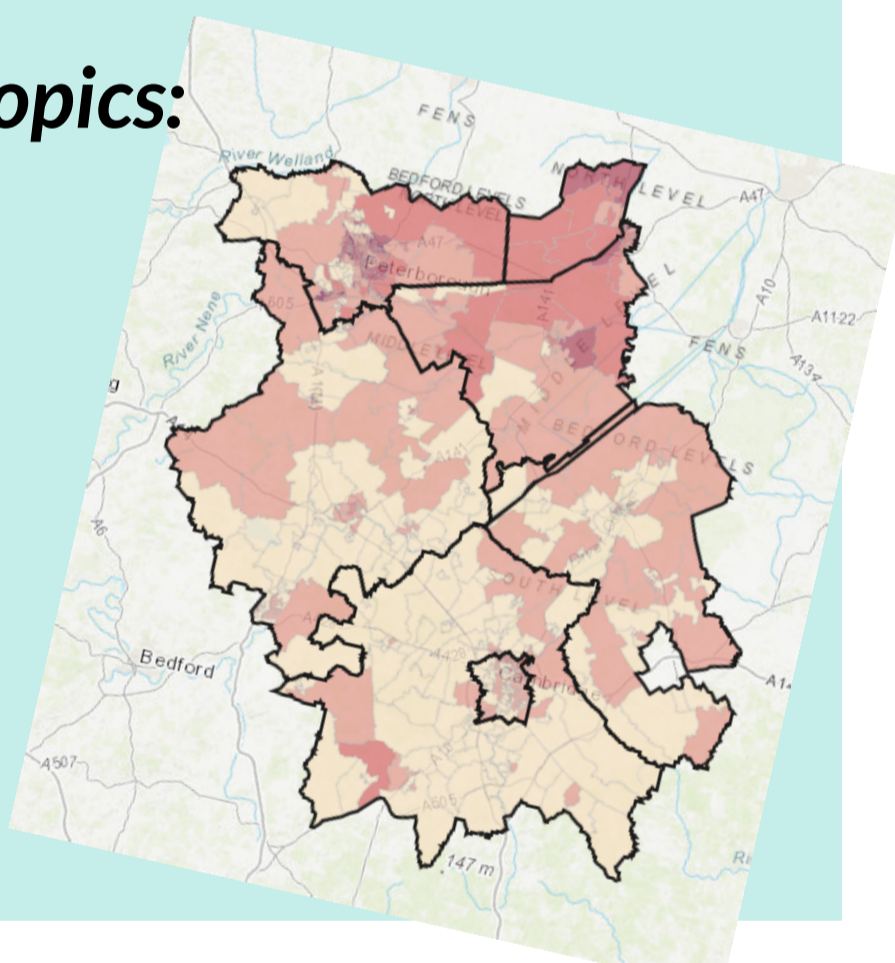
[Click here for the Parish Profile Builder!](#)

### Local Ward Profiles

Ward profiles are available for the following topics:

- Children, Young People & Education
- Crime & Community Safety
- Deprivation
- Economy & Employment
- Environment
- Housing
- Population

[Click here for the Ward Profile Builder!](#)



Get at a glance figures, graphs and maps on specific topics relevant to your area

## Topics

Adult Social Care

Environment

Economy

Deprivation

Crime & Community Safety

Children, Young People & Education

Health & Wellbeing

Housing

Population

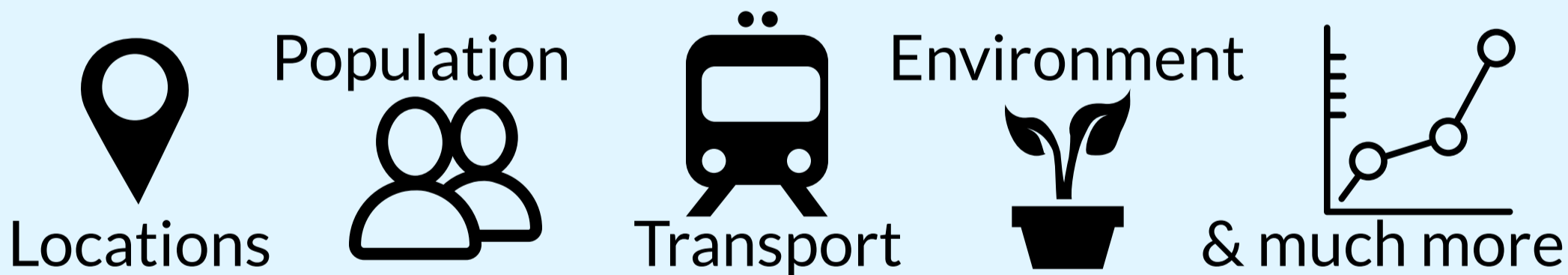
& More

Find up-to-date information, reports, maps and research

Click on the topic to go to the page!

## Open Data Portal

Organisations are sharing data in order to change the way we all live and work across Cambridgeshire and Peterborough as well as meet requirements for Open Government.



Examples of the kind of information you can find:

Population Growth

Education & Skills

Station Usage

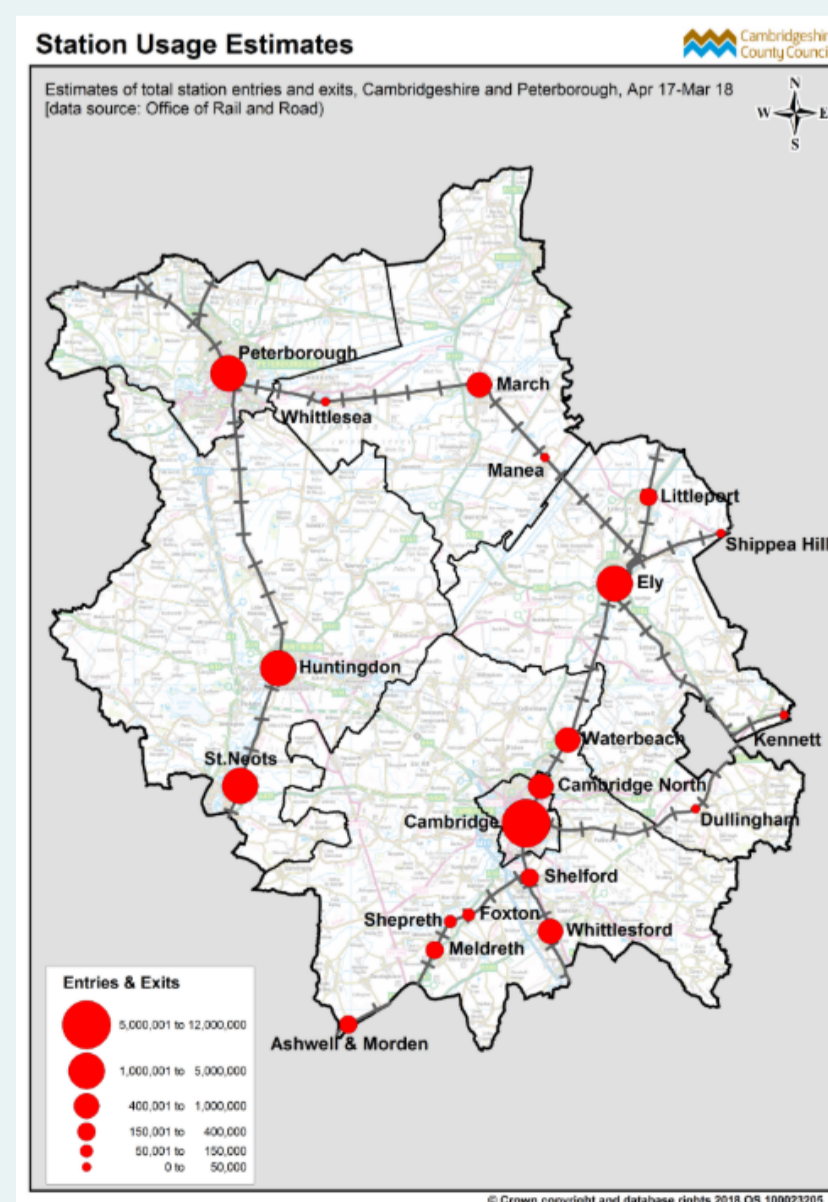
9.7%

Population Growth in Cambridgeshire and Peterborough from 2018 to 2041

55.6%  
Level 4  
Qualifications or  
Above

12%  
No  
Qualifications

In Cambridgeshire



Support funding bids, proposals, and projects with evidence-based statistics, graphs and figures.

