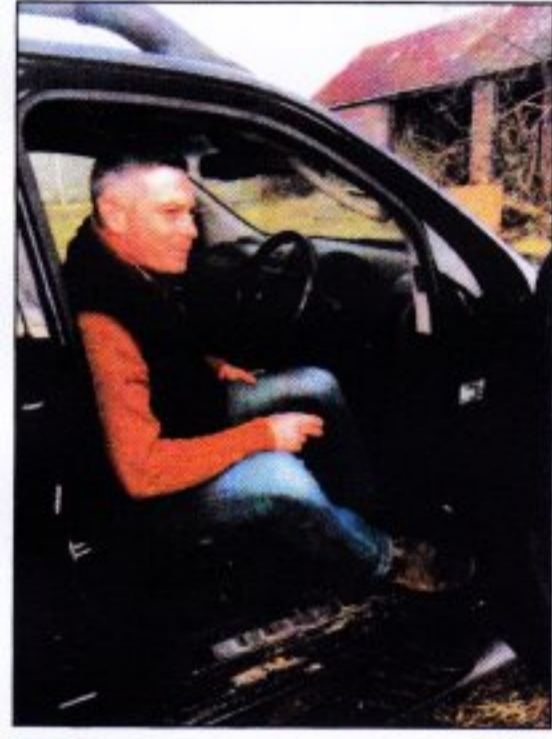


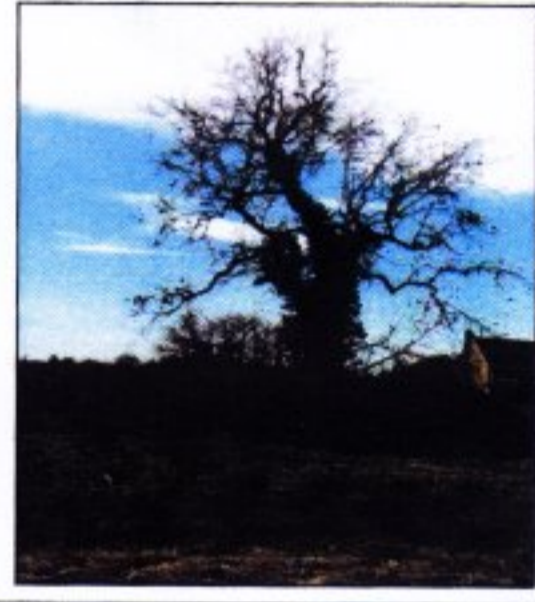


NEW HOMES FOR EASTREA

WHEN THE PROJECTS BEGAN



The few open spaces in the village boundary have been the targets for developers for years. There were always objections (access, loss of amenity, overcrowding) but this year we are finally seeing the infill development of some major sites. Development work on the farmland to the west of Wype Road (reported in our last edition) began when a tree surgeon, Mr Johnathan Harpham (left) came from March in January 2018 to inspect the ash tree on the site (right). The centuries-old specimen was hollow and much of it was rotten; it was removed later that spring.

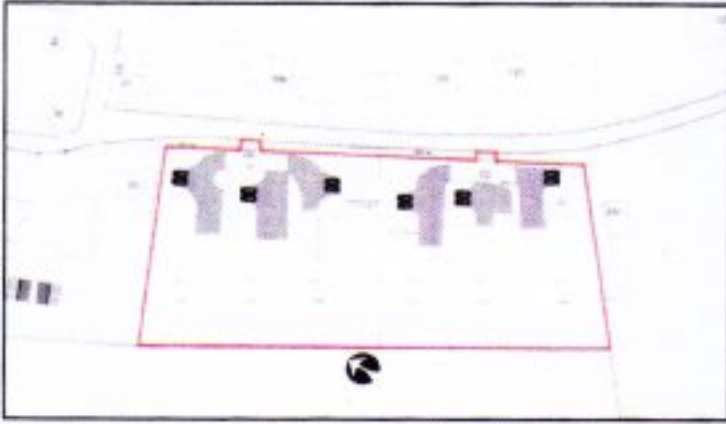


OUT WITH THE OLD—FROM BARNES TO BUNGALOWS

The derelict barns on Wype Road have been replaced with state-of-the-art bungalows constructed by the father-and-son company from Whittlesey, N D & J Developers, named from Nigel and David Taylor and Nigel's wife Janis. Said David: "The last Eastrea newsletter said the development was proceeding 'slowly'. Well, quality takes time—and we put much care into our buildings. We still use some traditional methods. The porches of both these new homes are hand-made of green oak, for instance. This is a project scheduled for eighteen months and we are still on time."

Meanwhile, enquiries about the former footpath show that, although used widely, nobody ever asked for it to be made a public right of way. And now a search is on for the old Wype Road sign that was fixed to one of the barns. It is thought that a local collector may have it — if so, please tell the Taylors. It is due to to be fixed back on a new plinth.

MORE ON WYPE ROAD



Next to the new bungalows, Peter Humphrey and Associates are agents for the development of six additional homes on White's farmland (left, currently under construction).

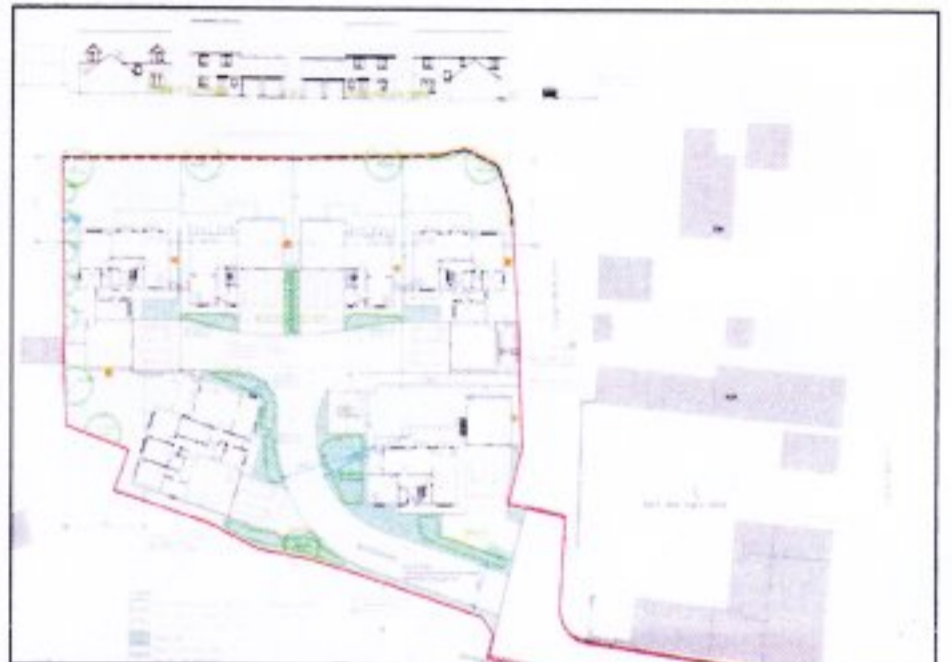
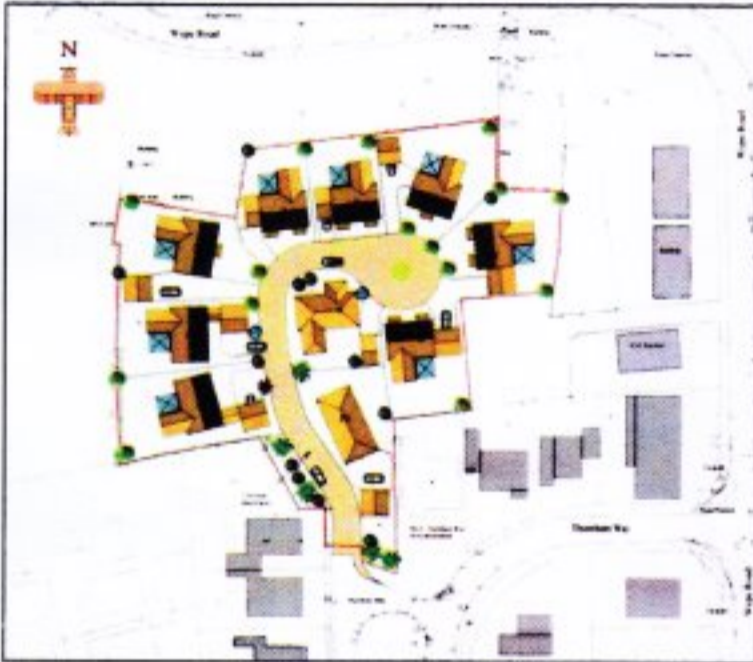
Each will have off-street parking for two vehicles and the new homes will reach Wype Road through two new access points. There will then be residential properties on both sides of the road — something that has been anticipated for years, but is only now coming to fruition.

FURTHER DELAYS ON THE KING'S DYKE BRIDGE

Work on the new railway bridge on the A605 is still delayed. It should look like the view below, but is still causing delays to vital traffic (right). Cost increases have been blamed; we are waiting to hear an update from the council.



Plans to Infill the Last Remaining Open Land in Eastrea



New housing has been proposed for the vacant plots north of Thornham Way (left) and behind the Nag's Head (right). Residents have already objected because of noise, traffic levels, effects on wildlife and limited access. Both projects are being considered by Fenland District Council and can be viewed online. The new Thornham Way application is reference F/YR19/0559/O. Development behind the Nag's Head is reference F/YR19/0467/RM. Residents wishing to know more can attend a meeting with Councillor Bob Wicks at the Eastrea Centre on Wednesday 17 July 2019 from 10 am to 12 noon. Representatives of the Citizens' Advice Bureau, who hold regular public sessions at the Hall, will also be in attendance.



EASTREA WILDLIFE

Mrs Beverley Brightley originally set up the Eastrea Village Community Group on Facebook. Beverley caught this vivid picture of our wild field poppies last month and her photograph features on the mast-head of this edition of Eastrea Village News.

There are so many talented photographers in the district, and with the growing interest in wildlife and the environment across Fenland, this Newsletter plans to publish more on the subject.

The field poppy is *Papaver rhoeas*, and its seeds (like those of geraniums and lettuces) need daylight to germinate. That explains the incredible blood-red blooms that covered the fields after WWI. The soil had been shattered by exploding shells and tank tracks ploughing up the farmland, and so – after the war had ended – years of poppy seeds had been uncovered and so they bloomed in unprecedented numbers.

Let us have your nature photographs if you'd like them to appear in the Newsletter. Send a note to mail@eastrea.net or to 6 Mayfield Road.