

County Council of the Isle of Ely
Education Committee



OFFICIAL OPENING

of

THE SIR HARRY SMITH SECONDARY SCHOOL, WHITTLESEY

by

COUNTY ALDERMAN J. W. PAYNE, J.P.

(Chairman of the Isle of Ely Education Committee)

On Thursday, 7th October, 1954, at 2.30 p.m.

County Council of the Isle of Ely
Education Committee



OFFICIAL OPENING

of

THE SIR HARRY SMITH SECONDARY SCHOOL, WHITTLESEY

by

COUNTY ALDERMAN J. W. PAYNE, J.P.

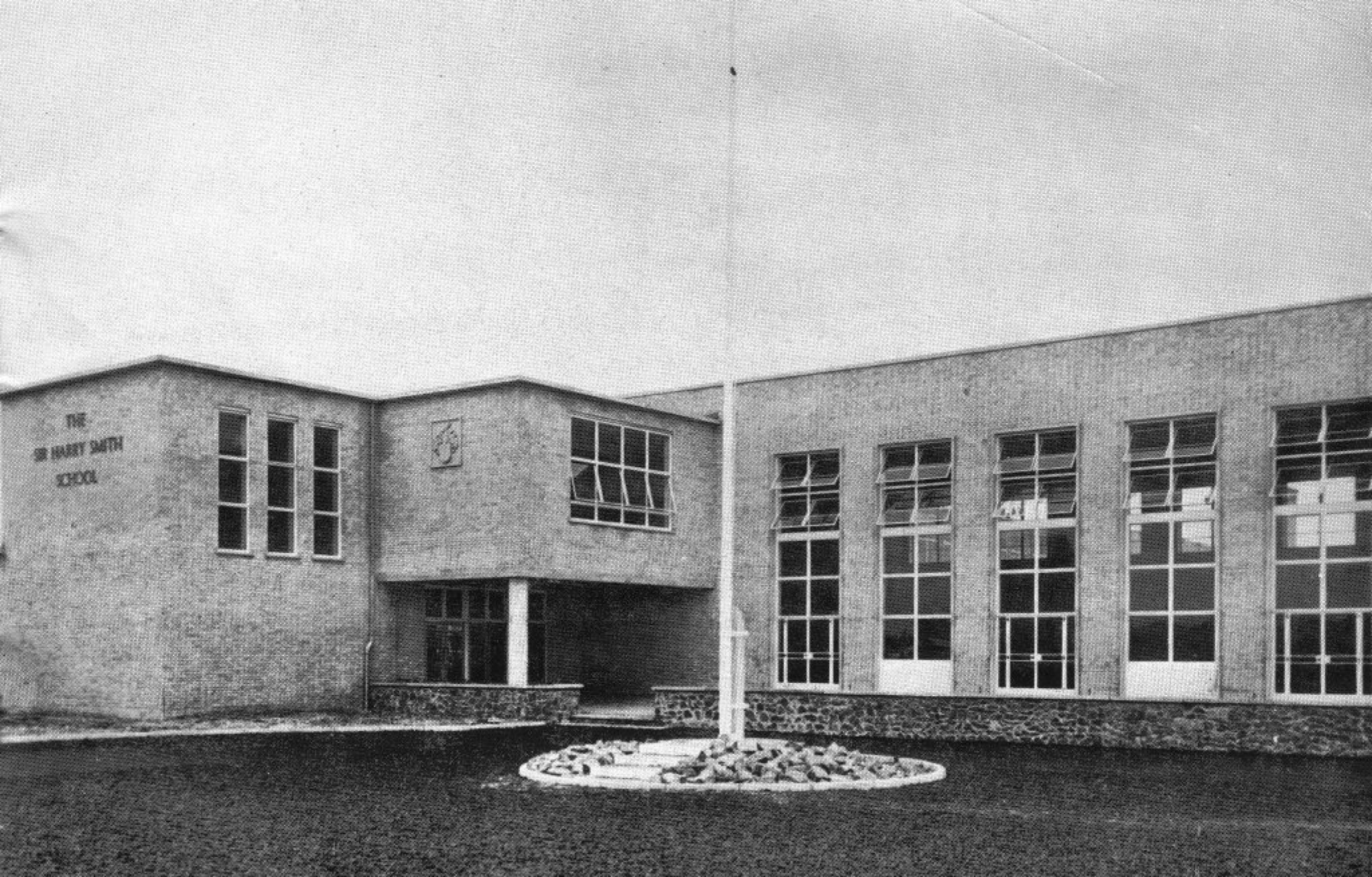
(Chairman of the Isle of Ely Education Committee)

On Thursday, 7th October, 1954, at 2.30 p.m.

THE SIR HARRY SMITH SECONDARY SCHOOL, WHITTLESEY

The School has been named the Sir Harry Smith Secondary School after Lieutenant General Sir Harry George Wakelyn Smith, Bt., G.C.B., Colonel Commandant of the Rifle Brigade, who was born in Whittlesey in 1788. When he was sixteen years of age he joined the Whittlesey Yeomanry and made the Army his career. He served in Spain with Sir John Moore at Corunna and with the Duke of Wellington in the Peninsular War. He also fought in North America and later shared in the overthrow of Napoleon at Waterloo. He was appointed Adjutant General to the Army in India and won great fame as the victor of Aliwal in the First Sikh War.

Exterior view showing Main Entrance and Assembly Hall



THE
SIR HARRY SMITH
SCHOOL



ISLE OF ELY EDUCATION COMMITTEE

Chairman: COUNTY ALDERMAN J. W. PAYNE, J.P.

Vice-Chairman: COUNTY ALDERMAN W. E. H. ROWE, J.P.

COUNTY ALDERMAN J. C. ARMIGER
COUNTY ALDERMAN F. W. EVERITT, J.P.
COUNTY ALDERMAN THE REV. F. F. HERBERT
COUNTY ALDERMAN C. A. JACOBS, J.P.
COUNTY ALDERMAN G. W. NEWELL
COUNTY ALDERMAN J. W. A. OLLARD, D.L.
COUNTY ALDERMAN A. S. RICKWOOD, M.B.E., J.P.
COUNTY ALDERMAN L. W. H. ROWE
COUNTY COUNCILLOR T. W. ANTHONY, J.P.
COUNTY COUNCILLOR MRS. F. A. BARRETT
COUNTY COUNCILLOR F. H. G. BAYLIS
COUNTY COUNCILLOR L. BROOKS
COUNTY COUNCILLOR T. BURLING

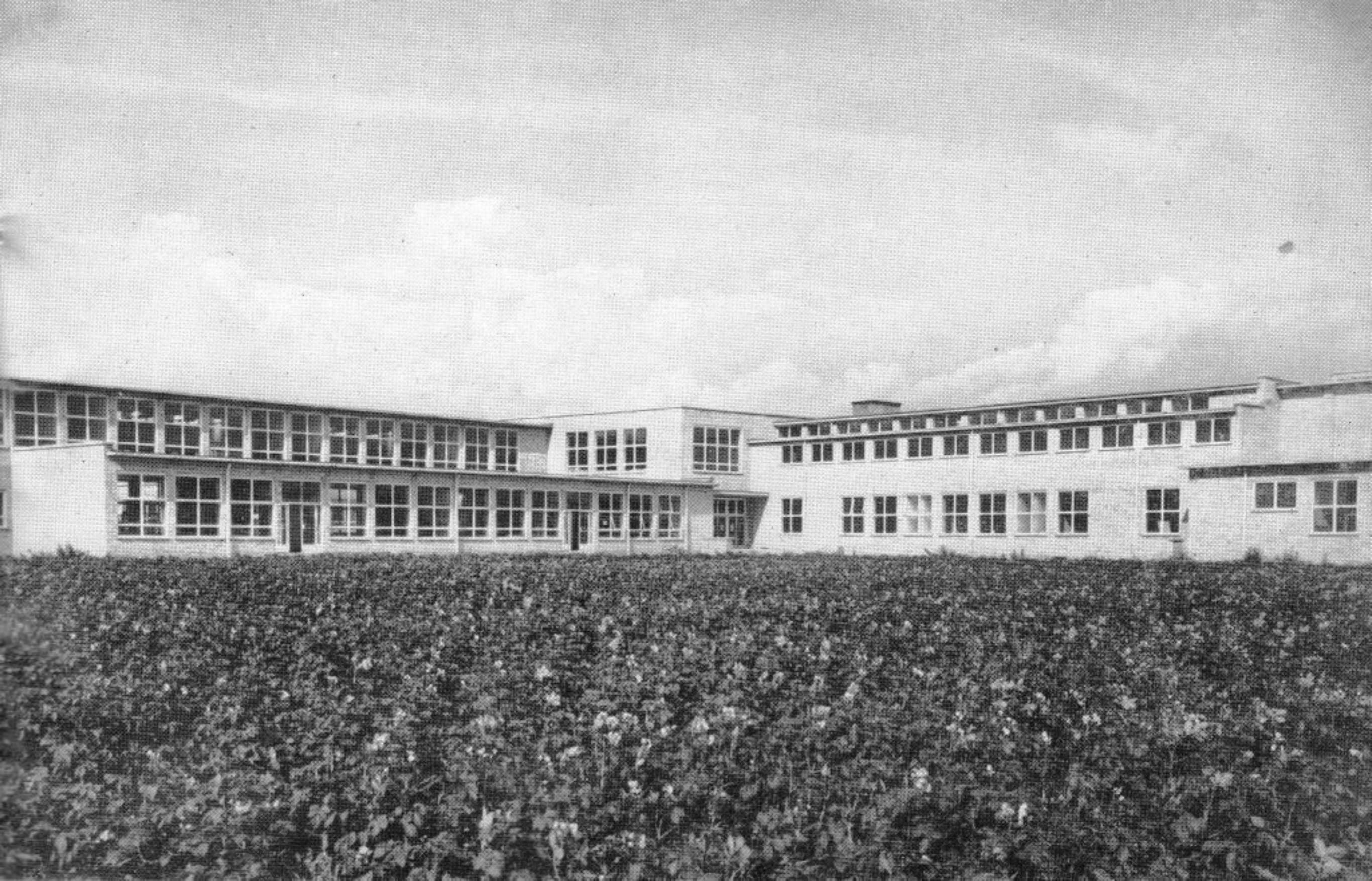
MRS. M. BURN
J. S. COLLINGWOOD, ESQ., M.C., J.P.
L. W. FRANCE, ESQ.
MRS. A. J. GREEN
MRS. F. HARTLEY

COUNTY COUNCILLOR R. G. CURSTON, J.P.
COUNTY COUNCILLOR W. E. COX
COUNTY COUNCILLOR C. DALE
COUNTY COUNCILLOR T. H. ELLINGHAM, J.P.
COUNTY COUNCILLOR F. E. KING
COUNTY COUNCILLOR J. A. NORMAN
COUNTY COUNCILLOR W. NURSE
COUNTY COUNCILLOR F. K. OGDEN
COUNTY COUNCILLOR M. PAYNE
COUNTY COUNCILLOR C. H. ROWE
COUNTY COUNCILLOR J. M. SNEESBY
COUNTY COUNCILLOR H. TASH
COUNTY COUNCILLOR MISS J. TEBBUTT, J.P.

COUNTY COUNCILLOR B. G. WRIGHT

MRS. A. E. LUDMON
MRS. J. H. MARTIN
A. NORMAN, ESQ.
REV. CANON MOWBRAY SMITH
MRS. J. W. TURNER

Exterior view showing the Library, Pupils' Entrance, Teaching and Administrative Accommodation



THE GOVERNORS OF
THE SIR HARRY SMITH SCHOOL, WHITTLESEY

Chairman: COUNTY ALDERMAN C. A. JACOBS, J.P.

Vice-Chairman: C. W. ANDERSON, ESQ.

COUNTY COUNCILLOR T. W. ANTHONY, J.P.
J. BARRETT, ESQ.
MRS. J. W. BOWKER, J.P.
COUNTY COUNCILLOR C. DALE
G. W. MILLER, ESQ.

COUNCILLOR F. H. NEWMAN
COUNTY COUNCILLOR M. PAYNE
COUNTY COUNCILLOR H. S. POTTS
COUNCILLOR A. B. SAUNDERS
COUNCILLOR MRS. I. M. TURNER

MRS. J. W. TURNER

Head Master: I. N. BURGESS, M.B.E.

Senior Assistant: MISS E. M. BARTHOLOMEW

County Architect: R. D. ROBSON, A.R.I.B.A., A.I.STRUCT.E.

Chief Education Officer: T. G. FENDICK, M.A., LL.B., *Barrister-at-Law*.

Deputy Chief Education Officer: E. A. PEARCE, M.B.E., A.C.I.S.

The Assembly Hall



ORDER OF CEREMONY

PRAYER — Rev. G. E. Quinion, M.A.

READING — Rev. G. A. East

HYMN

INTRODUCTION BY THE CHAIRMAN

County Alderman C. A. Jacobs, J.P., Chairman of the Governors

ADDRESS BY COUNTY ALDERMAN J. W. PAYNE, J.P.

Chairman of the Isle of Ely Education Committee, who will declare the School open

VOTE OF THANKS TO COUNTY ALDERMAN J. W. PAYNE, J.P.

Proposer: C. W. Anderson, Esq., Vice-Chairman of the Governors

Secunder: County Councillor T. W. Anthony, J.P.

VOTE OF THANKS TO THE CHAIRMAN

Proposer: County Councillor C. Dale

Secunder: Mrs. J. W. Turner, Isle of Ely Education Committee

THE NATIONAL ANTHEM

FOLLOWING THE OPENING CEREMONY YOU ARE INVITED TO INSPECT THE SCHOOL

Pupils' Entrance Hall



THE SIR HARRY SMITH SECONDARY SCHOOL, WHITTLESEY

The Education Act of 1944 laid down that Secondary Education must be made available for every child over eleven, without cost to the parent.

In accordance with the Act the Isle of Ely Education Committee prepared a Development Plan for Primary and Secondary Education in relation to the immediate and the prospective needs of the area.

For the Whittlesey area the Development Plan included a Secondary School. The first instalment now completed will provide accommodation for some 360 senior mixed pupils from the Whittlesey, Coates, Turves, Ponder's Bridge and the King's Dyke districts.

The Whittlesey Secondary School is planned to accommodate 600 children as well as to provide facilities for Further Education. Some of the accommodation which would be uneconomical to build in instalments—the assembly hall, crush halls, cloakrooms, lavatories, boiler house and administration and circulation areas, has been provided of a size suitable for the complete school.

The whole site with its grounds, tennis courts, gardens and playing fields, comprises 26 acres, and is adjacent to a large new housing estate.

The whole characteristic of the building is spaciousness, and pastel colouring is used to enliven its functional purpose. The furnishings and fittings of the school have been designed for simplicity and utility, giving ease of working and economy of effort. Every facility for a full education has been provided so that secondary pupils will be able to develop all sides of their personalities.

The area served by the school includes part of the region where brickmaking is the chief industry, and the proximity of Peterborough must influence the future employment of the pupils. The school is situated, however, in the midst of a rich agricultural area and although the type of education provided will prepare both boys and girls for employment later in industry or commerce, ample provision has also been made for the pupils to follow a Rural Science course in which animal husbandry will play its part.



To the left of the window, letters consist
because of a flower (puff)
either for a flower (puff)
high all the round
silky heavy lovely
woolly heavy lovely
all the round
the round

There is a large well-equipped kitchen incorporated in the building and two dining halls with accommodation for 600 pupils, so that each pupil attending may take a well-balanced mid-day meal.

The rooms look out upon a large area of playing fields which will give every opportunity for physical development. There is a sports pavilion with changing rooms, shower baths and equipment stores, together with sanitary accommodation. Three hard tennis courts are situated close to the pavilion.

At the rear of the school there is an extensive school garden with a greenhouse and tool shed.

Every side of a pupil's well-being has been considered and the school is one of which the pupils can be justly proud, and in which the parents can be keenly interested, and teachers give of their best.

The accommodation now provided includes :

TEACHING ACCOMMODATION (*First Instalment only*):

On the Ground Floor.

4 Classrooms each 520 sq. ft. and each with a storeroom.

Science Laboratory 970 sq. ft. with a Preparation Room adjoining.

Assembly Hall 3,600 sq. ft. and a Stage.

On the First Floor.

Needlework Room 808 sq. ft.

Craft Rooms 972 and 964 sq. ft. respectively, and each with a large storeroom.

Library 1,903 sq. ft.

Library Classroom 564 sq. ft.

Book-keeping Room 744 sq. ft. and storeroom.

Geography Room 744 sq. ft. and storeroom.

Visual Education Room 744 sq. ft.

OTHER ACCOMMODATION :

Ground Floor.

Entrance Crush Hall for the Assembly Hall with Adult Cloakroom and Lavatory Accommodation adjoining.

Warden's Room.

Committee Room.

Senior Mistress' Room with Cloakroom and Lavatory.

Visitors' Waiting Room (Temporarily used as Staff Room).

Secretary's Office.

Headmaster's Room with Cloakroom and Lavatory.

Medical Inspection Room with Lavatory and Storeroom.

Waiting Room with undressing cubicles for children attending Medical Inspection.



Children's Main Entrance Crush Hall.
Boys and Girls Prefects' Rooms.
Boys' and Girls' Cloakrooms.
Boys' and Girls' Drying Rooms.
School storage accommodation.
Caretaker's Stores.
Outside Equipment Store.
Meter and Switch Room.
Covered Play Area.
Dining Hall.
Kitchen and Servery.

First Floor.

Projection Room.
Rewinding Room.
Battery Room.

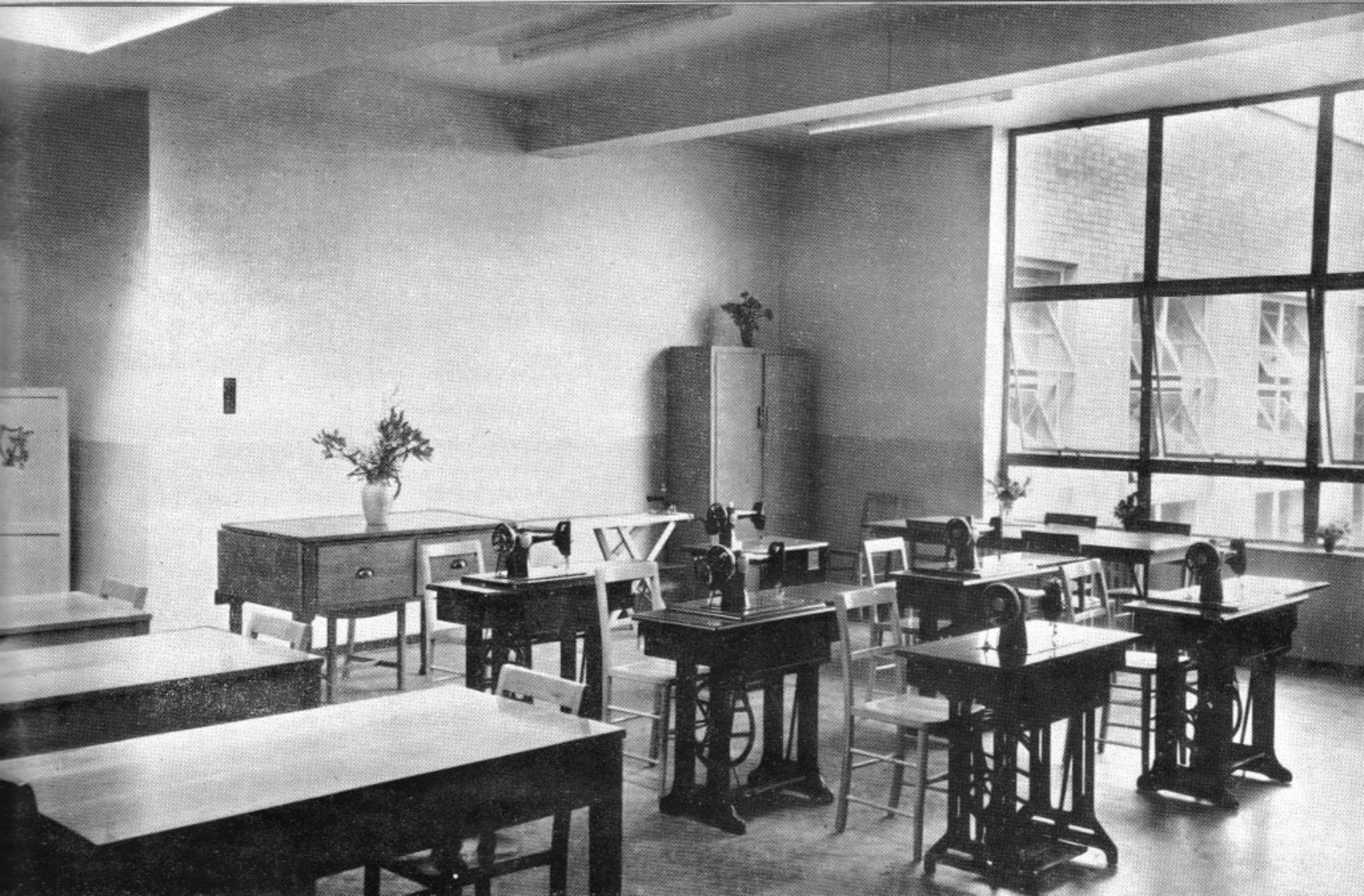
The main entrance to the school is from Eastrea Road, Whittlesey. The gates to the school site are set back to allow a tarmac area in front so that the buses conveying school children can park off the main road. A car park is also provided in front of the Assembly Hall and a concrete site road serves the Dinner Kitchen, the Boiler House and the playing field at the rear. There is a further entrance from Drybread Road at the back of the school.

A house for the Caretaker is provided at the main entrance to the school.

At the South end of the building the accommodation around the Entrance Crush Hall for the Assembly Hall and the corridor on the first floor served by the staircase leading from it has been designed so that it will not only provide school accommodation but also facilities for Further Education.

The children's Main Entrance Crush Hall is the focal point of the purely school parts of the building. From it, to the South a wide corridor leads to the Assembly Hall and the administrative accommodation—the Headmaster's, Senior Mistress' and Secretary's Offices and the Medical Inspection Room; and to the North lies the boys' cloakroom and sanitary accommodation; to the west the ground floor classrooms and girls' cloakroom and sanitary accommodation; to the east two pairs of double doors lead to the Dining Hall and Kitchen accommodation and to the north there is also access to the covered play area which adjoins the tarpaved playground. From this Crush Hall the main staircase leads to the first floor teaching accommodation.

On the ground floor, in future, five classrooms are planned to lead from the west corridor in a similar manner to the present four classrooms and from the staircase



vestibule leading off this corridor a future extension has been planned to accommodate Woodwork, Metalwork and Domestic Science Rooms and an additional Science Laboratory. Some of this accommodation will replace the temporary hutted classrooms behind the Assembly Hall. At the north end of the building a gymnasium with changing rooms will be provided.

On the first floor additional teaching accommodation is planned to extend northwards and westwards over the existing ground floor rooms.

Construction.

Part of the building is steel framed faced with brickwork and the remainder has load-bearing brick walls, both parts have light steel lattice roof and floor beams. These support precast reinforced concrete Robmac floor and roof slabs which form a complete floor and roof "deck" over the building. Roofs are screeded to fall to precast concrete gutter units and covered with three layers of bituminous roofing. The roofing is finished with Derbyshire white spar chippings to reflect the sun's rays.

Floors have varying type of tile finish suitable for their uses and suitable for floor heating. Walls internally are plastered. Ceilings are of insulating fibre board with concealed fixing.

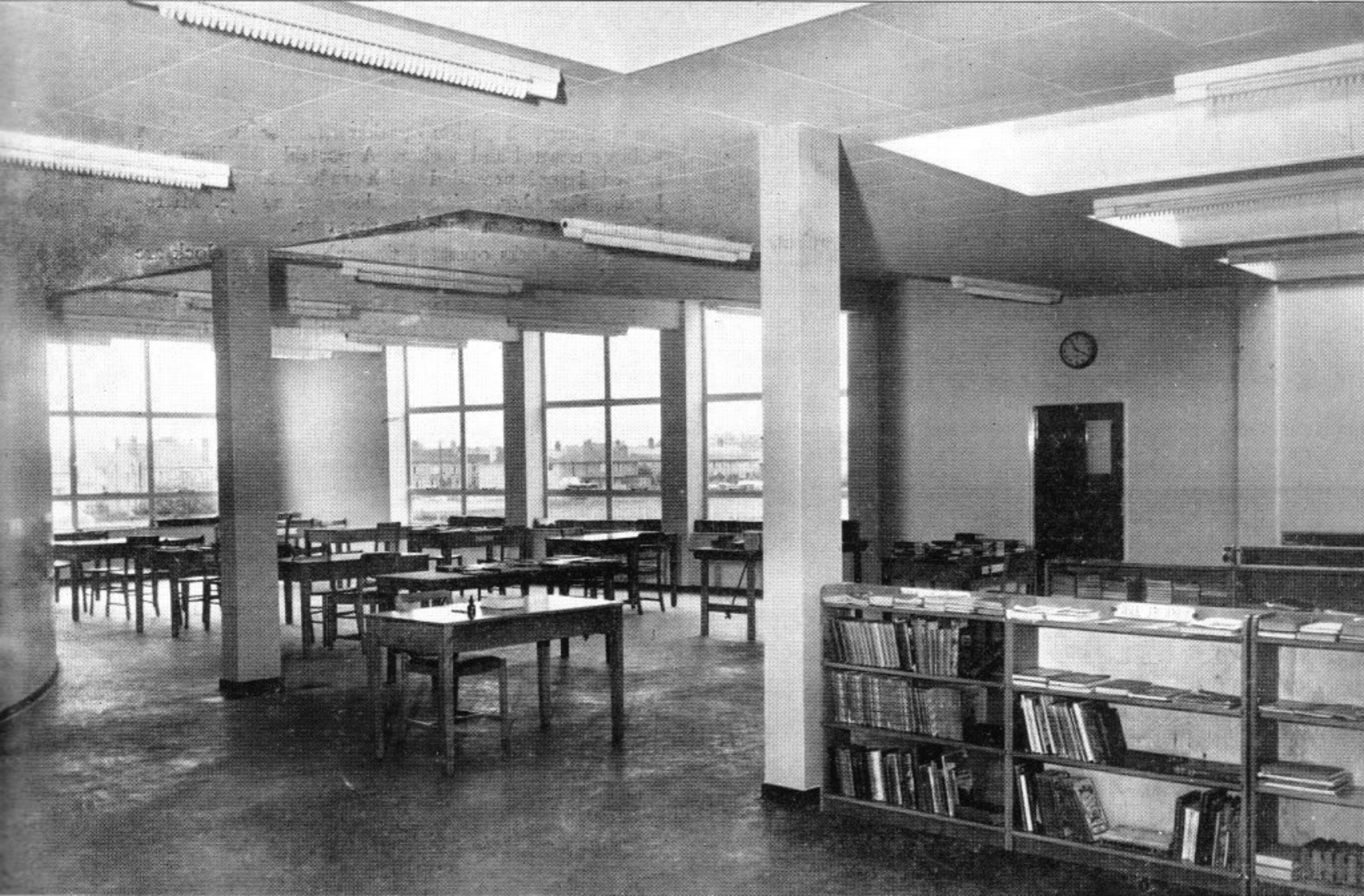
Daylighting.

Large windows are provided which are supplemented in the first floor rooms with roof lights and with clerestory windows above the corridor, the latter affording the necessary means of cross ventilation at top level. The daylighting in classrooms gives a limit well within the scientific requirements of light on the working plane, i.e., at the table, desk or bench top.

Heating and Domestic Hot Water Supply.

Heating in all classrooms, Assembly Hall and administration accommodation is by low pressure hot water flowing through pipe coils bedded in the floors and in the walls. In other parts of the building heating is by means of radiators and pipe coils. Hot water and cold water is provided to all wash hand basins. Central heating and the hot water supply is provided from boilers fitted with electrically operated automatic stokers. The boilers are so intervalved that all or one may be used as the demand requires. This intervalving also allows for isolation purposes so that maintenance can be carried out without unduly interfering with the running of the installation.

The whole system is automatically operated and the temperature inside the school buildings is controlled



thermostatically according to the outside atmospheric temperatures.

Power and Artificial Lighting.

Power and artificial lighting are provided by electricity. In the classrooms and library the lighting is by means of fluorescent tubes fitted with metal fin diffusers. Elsewhere lighting is provided by tungsten lamps with glass shades which have been carefully selected to give the correct diffusion and to harmonise with the character of the building.

A fully equipped stage lighting system is provided, complete with colour mixing and dimmer control. The main lighting of the Assembly Hall is also controlled by an automatic push-button dimmer. Secondary lighting is provided in the Assembly Hall, Stage and the Entrance Hall in case of the failure of the mains supply.

Wireless is transmitted to Loudspeakers in all classrooms and the Assembly Hall from a central radio and sound equipment panel situated in the Secretary's Office. This panel also has attachments for a microphone and local broadcasts can be made through the

loudspeakers. Each loudspeaker has a local switch, a volume control and a plug. A portable amplifier and record player is provided which can be used at any of the loudspeaker plug positions including the stage. Microphone points are provided on the stage.

Electric clocks operated through a master clock are provided in strategic positions in the School.

The Science Laboratory is fitted with an electric low-voltage apparatus having socket outlets to wall benches for experimental purposes both in A.C. and D.C. currents.

Heavy and comprehensive electrical and gas cooking equipment is provided in the dinner kitchen where the school meals are prepared.

Decorating.

The decorating scheme throughout was carefully formulated on modern scientific concepts to ensure correct visual environments for all children.

The buildings were designed by, and erected under the supervision of the County Architect.

THE SIR HARRY SMITH SCHOOL, WHITTLESEY

MAIN CONTRACTORS: Messrs. Rose & Sons Ltd., Whittlesey

Sub-Contractors:

BRICKS (FACINGS AND COMMONS)

The London Brick Co., Peterborough and London

STRUCTURAL STEELWORK

Messrs. Cargo Floor Iron Co. Ltd., Stockton-on-Tees

ROBMAC FLOOR AND ROOF SLABS

Messrs. Dowmac (Products) Ltd., Tallington, Stamford, Lincs.

BITUMASTIC ROOF COVERING

Messrs. Vulcanite Ltd., 76, Queenstown Road, South Lambeth, London, S.W.8

METAL WINDOWS AND ROOFLIGHTS

Messrs. West Bromwich Casement and Engineering Co. Ltd., George Street, West Bromwich

PRESSED METAL DOOR FRAMES AND MAIN ENTRANCE DOORS AND FRAMES

Messrs. Henry Hope & Sons, Ltd., Smethwick, Birmingham

ARTIFICIAL STONE WINDOW SILLS

Messrs. Tidnams Ltd., 25, Market Place, Wisbech

COMPOSITION BLOCK FLOORING

Messrs. Granwood Flooring Co. Ltd., Riddings, Derbyshire

CONCRETE FLOOR TILES

Messrs. Evans Bros. (Concrete) Ltd., Riddings, Derbyshire

TERRAZZO FLOOR TILES

TERRAZZO W.C. PARTITIONS

TERRAZZO FINISH TO TWO STAIRCASES

Messrs. Roman Mosaic Ltd., Factory Road, Tipton, Staffs.

CEMENT GLAZED DADOES IN LAVATORIES AND W.C.S.

Messrs. Robb's Cement Enamel Finishes Ltd., 245, Vauxhall Bridge Road, London, S.W.1

HEATING AND HOT WATER INSTALLATION

Messrs. G. N. Haden & Sons, Ltd., Guildhall Street, Lincoln, and London

ELECTRICAL INSTALLATION

Messrs. Johnson, Pearce & Co. Ltd., 48, Pitt Street, Norwich

GAS INSTALLATION

Messrs. Eastern Gas Board, New Road, Peterborough

SANITARY FITTINGS

Messrs. Adamsez Ltd., Scotswood, Newcastle-on-Tyne, 5

LLOYD INSULATION BOARD CEILINGS

Messrs. Peters Contractors Ltd., 31, Rochester Road, Coventry

ENTRANCE GATES

Messrs. Bayliss, Jones & Bayliss, Victoria Works, Wolverhampton

STONE ARMS PANEL

Messrs. J. S. Miller & Sons, Lynn Road, Wisbech

TIMBER DOORS

Messrs. A. Christmas & Sons, St. Peter's Road, March

IRONMONGERY

Messrs. James Gibbons, Ltd., St. John's Works, Wolverhampton

BALUSTRADES TO STAIRCASES

Messrs. Woodrow Metals Ltd., Tweedside Place, Stonehouse,
Plymouth

BLACKBOARDS

Messrs. Wilson & Garden Ltd., Kilsyth

CLOAKROOM FITTINGS

Messrs. Cloakroom Equipment Ltd., Station Street, Bromsgrove
Worcs.

STAGE CURTAINS AND TRACK

Messrs. G. B-Kalee, Ltd., Mortimer House, 37-41, Mortimer
Street, London, W.1

DECORATING MATERIALS

Messrs. Hadfields (Merton) Ltd., Mitcham, Surrey

FURNITURE AND EQUIPMENT

The main items of furniture and equipment have been supplied as follows :

DUAL LOCKER DESKS AND CHAIRS

CLASSROOM TABLES

TEACHERS' TABLES

HANDICRAFT TABLES

BOOKSHELVES

ART TRESTLES AND TABLE TOPS

The Educational Supply Association, Ltd., Stevenage

NESTING CHAIRS FOR HALL

Messrs. Cox & Co. Ltd., Watford

NON-NESTING CHAIRS

Messrs. Smith & Co., High Wycombe

FOLDING TABLES

LABORATORY TABLES

LIBRARY TABLES

TEACHERS' CHAIRS

CUPBOARDS

WOOD NESTING CHAIRS

LABORATORY STOOLS

Messrs. Kingfisher Ltd., West Bromwich

DUPLICATOR

Messrs. Roneo Ltd., Norwich

PHYSICAL EDUCATION APPARATUS

The Olympic Gymnasium Co. Ltd.

T. G. Fendick, M.A., LL.B., Chief Education Officer

Photographs by Lilian Ream Ltd., Wisbech

H. L. Benton, Whittlesey